

LEXIS KOREA 2022

SEOUL | BUSAN





WELCOME TO LEXIS KOREA

Lexis Korea provides Korean language programs of the highest academic quality in two of Asia's most iconic and dynamic cities.

Both Seoul and Busan campuses are in downtown areas, minutes away from public transport, in purpose-built facilities that provide a modern study environment to complement our range of innovative programs.

We are the proud winner of the prestigious STM World School award, an award voted on by industry professionals worldwide.

Our committed staff offer personalised and complete support for students during their Korean language learning experience. Whether you are seeking an intensive academic program or are more interested in building your Korean conversational skills for travel, work and leisure, Lexis Korea offers a wide range of high-quality programs suitable for all levels.

With Lonely Planet recently placing South Korea second in its Top 10 must-visit countries, now is the perfect time to come to Korea and explore the mysteries that it holds.

We invite you to begin your journey with us, and we look forward to sharing all that this vibrant and exciting country has to offer.

A stylized black ink signature of JeeHo Kim.

JeeHo Kim
Managing Director
Lexis Korea





CONTENTS

THE CITY

SEOUL	03
- SEOUL CAMPUS	
BUSAN	05
- BUSAN CAMPUS	

THE COURSES

KOREAN COURSES	07
PATHWAY TO UNIVERSITY	09
IELTS EXAM PREPARATION	10

LEXIS EXPLORE	11
---------------	----

LEXIS ACCOMMODATION	13
---------------------	----

STUDENT SERVICES	17
------------------	----

STUDENT REVIEWS	18
-----------------	----

THE CITY SEOUL

SEOUL, the capital of South Korea, is a vibrant and energetic city, offering endless opportunities for discovery and enjoyment.

Being a 'city of villages', it seems that every subway stop adds a whole new dimension to Seoul – you can experience the fashion madness of Gangnam, the alternative music scene in Hongdae, and the diverse shopping streets of Myeongdong.

As one of Asia's leading cultural sites, Seoul has five ancient palaces and five UNESCO World Heritage sites that you must pay a visit to. Come and lose yourself in hundreds of museums, performance centres and galleries. Bargain hard at markets and underground shopping centres, or treat yourself to the delights of the world's leading fashion boutiques.



This city that never sleeps becomes a whole new world at night, where you can party away at fashionable nightclubs and trendy bars, or relax with your friends over bulgogi and beer.

Seoul has something for everyone, regardless of whether you are here just for a week or for a few months. Whatever the time of year, an almost endless selection of entertainment awaits you.

POPULATION

 **SOUTH KOREA**
51,820,000
SEOUL
9,550,000

LIVING EXPENSES

		
LUNCH KRW	COFFEE KRW	MOVIE TICKET KRW
7,000	4,000	11,000

DISTANCES FROM THE AIRPORTS

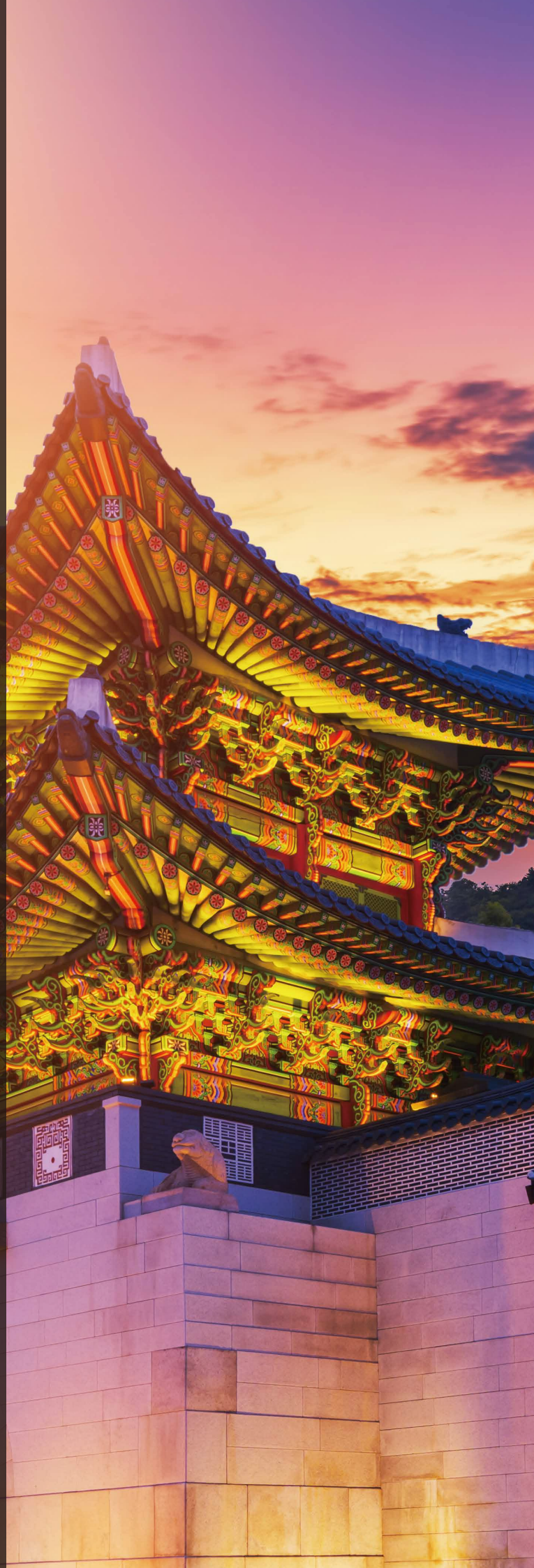
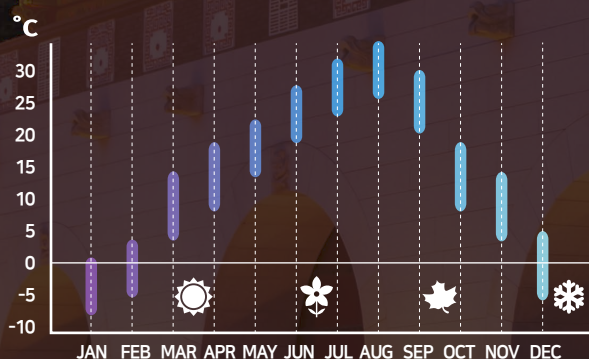
 **INCHEON**
INT'L
50
mins

GIMPO
DOMESTIC
35
mins

		
TAXI START FARE KRW	BUS FARE KRW	SUBWAY TICKET KRW
3,800	1,300	1,350

* KRW 1,200 = Approx. USD 1.00
* The average price in 2020

CLIMATE



SEOUL CAMPUS

SEOUL CAMPUS is just a few steps away from Gangnam Station, in the vibrant heart of one of Asia's best known fashion and entertainment districts. Hundreds of cafes, restaurants, bars and clubs are within a short walk, while the fast and efficient Seoul Metro links Gangnam to the rest of the city and beyond.

Lexis Korea occupies 3 floors of the ANY Tower building, with floor-to-ceiling glass windows providing views over the buzzing streets of Gangnam. A rooftop garden area offers students a quiet refuge from the hustle and bustle of the city below.

With 18 large air-conditioned classrooms, Lexis Korea has world class facilities designed to ensure that students can make the most of their study experience in a safe and comfortable environment.

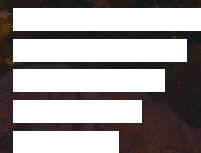
SEOUL CAMPUS INFORMATION



STUDENTS
250

AVERAGE CLASS SIZE **12**
18 CLASSROOMS

TOP NATIONALITIES



 US
 UK
 FRANCE
 GERMANY
 CANADA

COMMUTING TIMES

1 min

STUDENT RESIDENCE
GANGNAM STATION
CAFES / RESTAURANTS

15 mins

MINI STUDIOS

30 mins

HOMESTAYS
(BY BUS/SUBWAY)



Lexis Korea Seoul
Virtual Campus Tour



THE CITY BUSAN

Busan, South Korea's second largest city, is a beautiful city famed for its stunning beaches and lively food scene with fresh, delicious seafood.

Much more relaxed than the capital, Busan exudes a holiday-resort-city vibe, offering a completely different experience from Seoul. A paradise for nature lovers, Busan is surrounded by stunning natural landscapes, with a beautiful coastline and ocean views to the south as well as scenic mountains and cliffs to the north.

Just minutes from the bustling downtown area, you can lounge on one of Asia's finest beaches, explore the wilds of Korea's national parks, find inner peace meditating in a temple, or enjoy the fresh seafood at Korea's largest fish market.

There is also no shortage when it comes to Busan's thriving nightlife. Dance your night away at some of the best nightclubs at Gwangalli Beach, or if you prefer, unwind to some jazz at Haeundae Beach.

With its laid-back vibe, Busan is an ideal study location, that has an affordable cost of living and a welcoming temperate climate throughout the year.

If you wish to enjoy a relaxing and peaceful resort lifestyle whilst experiencing one of Korea's most buzzing cities, Busan is the place to be.

POPULATION



SOUTH KOREA

51,820,000

BUSAN

3,350,000

LIVING EXPENSES



LUNCH

KRW

5,500



COFFEE

KRW

4,000



MOVIE TICKET

KRW

11,000

DISTANCES FROM THE AIRPORTS



INCHEON

INT'L

3.5

hours

GIMHAЕ

DOMESTIC

30

mins



TAXI
START FARE

KRW

3,300



BUS
FARE

KRW

1,300



SUBWAY
TICKET

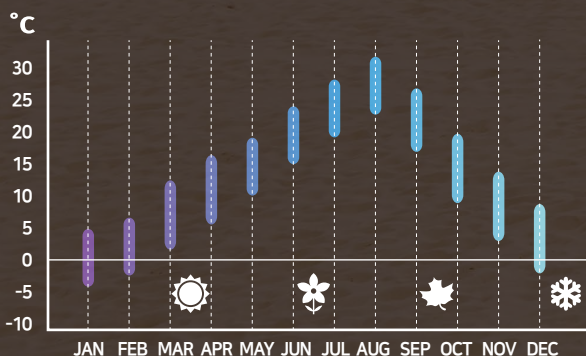
KRW

1,400

* KRW 1,200 = Approx. USD 1.00

* The average price in 2020

CLIMATE



BUSAN CAMPUS

BUSAN CAMPUS is situated on the 6th floor of the DS Tower. All classrooms are equipped with educational facilities, which create a warm, inviting, safe and secure environment that makes learning easier in a modern school environment.

Located in the heart of downtown Busan, the campus is in the centre of Busan's dynamic student area of Seomyeon and immediately opposite the uber-trendy Jeonpo Cafe Street. Great transport links connect the school to tourist hotspots such as Haeundae and Gwangalli beach, while the Seomyeon district itself bustles with life day and night.

University students and the city's young professionals flock to the area in the evenings to explore the myriad of cafes, bars and restaurants, while during the day, there is an endless number of eateries to explore and experience.

BUSAN CAMPUS INFORMATION



STUDENTS
120

AVERAGE CLASS SIZE **6**
10 CLASSROOMS

TOP NATIONALITIES



US
JAPAN
GERMANY
RUSSIA
BRAZIL

COMMUTING TIMES

1 min

STUDENT RESIDENCE
JEONPO CAFE STREET
RESTAURANTS

5 mins

SEOMYEON STATION
JEONPO STATION

15 mins

MINI STUDIOS

30 mins

HOMESTAYS
(BY BUS/SUBWAY)

Campus Transfer

Lexis Korea runs a weekly curriculum with both our Seoul and Busan campuses sharing the same course schedule. This allows students to seamlessly transfer their study from one campus to the other. Please come to our front desk and our friendly Student Services Team will organise your Campus Transfer to either Seoul or Busan.





THE COURSES

KOREAN COURSES

Lexis Korea has a wide range of Korean language programs both face-to-face and online to suit students of all levels and abilities. Whether you are seeking a brief introduction to the Korean language and culture, preparing for a TOPIK exam or university entrance, Lexis has dedicated staff and student support services, as well as a high quality curriculum, all aimed at helping you achieve your goals. Join us on-campus for our full cultural immersion or, if you have prior commitments or are unable to travel, there are also our live and interactive online courses. With small classes and plenty of individual attention from our local native teachers, you can be assured that your language skills will progress rapidly whether you study with us face-to-face or online.

EACH STUDENT WILL RECEIVE



AN INDIVIDUAL
LEVEL TEST



PERSONALISED MAP
STUDY PLAN FOR
PATHWAY STUDENTS



WEEK 1
INTERVIEW
& REVIEW



REGULAR 1:1
ACADEMIC
COUNSELLING

Your personal study plan is designed to guide your study whilst at Lexis. Based on your initial test results and interview with our Academic Manager, the MAP Study Plan ensures that we keep your study program on track, maximise the use of your out-of-class study time, and get the best possible language learning from your time in Korea.

COURSE LEVEL CHART

LEVEL	1	2	3	4	5	6	7
	Foundation	Beginner	Elementary	Pre Intermediate	Intermediate	Upper Intermediate	Advanced
Study Period	1 week	4 weeks	8 weeks	12 weeks	12 weeks	12 weeks	12 weeks



LEXIS 360°

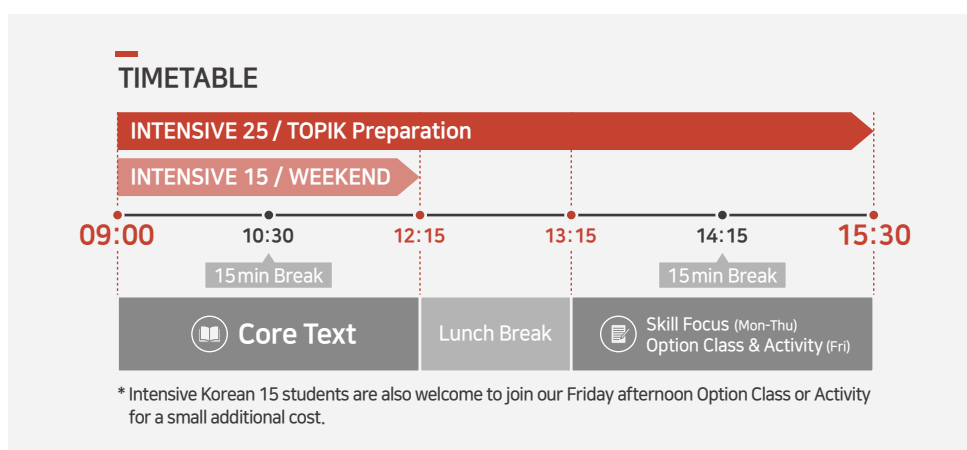
We understand that every student comes to Korea with their own unique goals, plans and learning needs.

Lexis 360° is our student academic care program, designed to ensure that all Lexis students receive individual support and attention, initiating the most successful study experience possible.



AVAILABLE COURSES

		 Face-to-Face	 Online
REGULAR KOREAN COURSES	· Intensive Korean 25	○	○
	· Intensive Korean 15	○	○
	· Evening Korean Course	○	○
	· Weekend Korean Course	○	○
TEST PREPARATION COURSES & SPECIAL PROGRAMS	· TOPIK Preparation	○	○
	· Junior Programs	○	
	· Study Tours	○	
	· Corporate Language Training	○	
1:1 KOREAN LESSONS	· 1:1 Intensive Korean	○	○
	· 1:1 Business Korean	○	○
	· Customisable Classes	○	○



OPTION CLASSES

Our Intensive Korean Option Classes are designed to allow you to focus on your own particular learning objectives. Amongst the most popular are:



Conversation



Breaking News Dictation



Job Club



TOPIK Preparation



Korean Etiquette Class



Book Club



K-Drama Class



Korean Kitchen



K-Pop Dance Class



THE COURSES PATHWAY TO UNIVERSITY

Our pathway program is designed to offer an alternate streamlined entry into an undergraduate or postgraduate degree program of universities in South Korea. To qualify for admission into university, international students (both new and transfer students) will have to satisfy certain requirements, Korean language proficiency being one of these.

PATHWAY PARTNER UNIVERSITIES

Our university pathway program will allow you to enter the following universities without taking TOPIK (Test of Proficiency in Korean).

KONKUK UNIVERSITY



HANYANG UNIVERSITY



DANKOOK UNIVERSITY



PATHWAY PROCEDURE

1 LEXIS KOREA INTENSIVE KOREAN 25

Upon enrolling at Lexis Korea, you will undertake a placement test to determine your language level. The course duration varies depending on your Korean proficiency level. Courses begin every Monday.

2 UNIVERSITY LANGUAGE INSTITUTE

After attaining your university's required Korean proficiency level at Lexis Korea, you will be eligible to enter the university's final ten week language program.

3 UNIVERSITY UNDERGRADUATE DEGREE

Following completion of the required level of the University Language Program, and on the condition that you meet all other requirements, you will be eligible to undertake an Undergraduate or Postgraduate Program.

THE COURSES

IELTS EXAM PREPARATION

Lexis not only offers Korean language programs – we are also one of Korea's leading IELTS exam preparation centres. The IELTS exam is used as a key entry requirement for universities in Korea and around the world. Lexis Korea's fast-paced and challenging exam preparation program is taught by qualified native English speaking instructors. Whether your aim is to attain an IELTS score for further tertiary study, or just to take a structured English language program in a fabulous multicultural environment, Lexis's academic IELTS program is a great way to take your English proficiency to the next level. Both our Seoul and Busan campuses are official IELTS Test Centres. Our students are at an advantage as they are able to take the test at the same place where they attend classes.

WHAT IS IELTS?

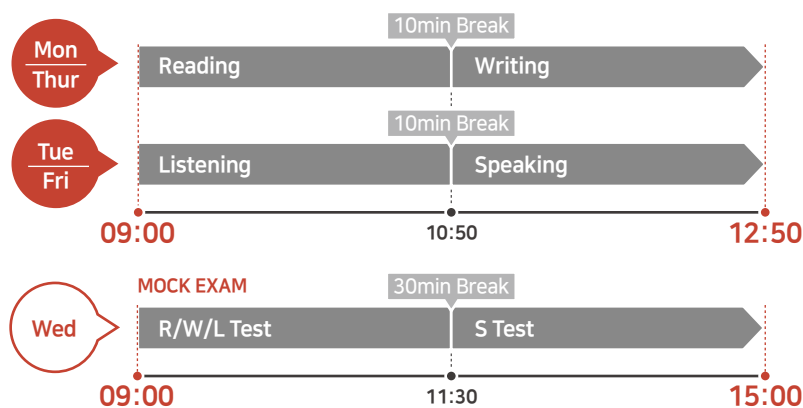
The International English Language Testing System is an international standardised test of English language proficiency. It is jointly managed by the University of Cambridge ESOL Examinations, the British Council and IDP Education Pty Ltd. There are two versions of IELTS: the Academic version and the General Training version. IELTS is accepted by most English speaking academic institutions, and may also be used for immigration purposes to Australia, US, New Zealand, Canada and UK.

WHY STUDY IELTS AT LEXIS?

Whatever your needs are, be it to satisfy immigration requirements of an English speaking country or to further your academic studies at a university, our IELTS exam preparation course will help you to realise your study purposes. At Lexis, you will:

- 01** Receive tuition from a knowledgeable and experienced IELTS exam preparation instructor.
- 02** Take practice tests using past papers, with answer guides and personalised teacher feedback.
- 03** Improve your reading, writing, grammar, vocabulary, speaking and listening skills.
- 04** Improve your English whilst working towards an internationally recognised qualification.

IELTS EXAM PREPARATION COURSE TIMETABLE



LEXIS EXPLORE KOREAN CULTURAL EXPERIENCES

To ensure that you make the most of your time at Lexis Korea, we offer monthly social and cultural activities with regular excursions to various places of interest, both historical and contemporary, to share with you our Korean history, culture and traditions.



LEXIS ACTIVITIES

There is so much more to explore than language study! Our Student Services team arranges regular afternoon activities and day trips to introduce glimpses of South Korea and its culture.

Check out our blogs at www.LexisSeoul.com and www.LexisBusan.com for the latest updates!

LEXIS MEET UP

For many students, the highlight of their stay is Lexis Meet Up. This fortnightly event, held at a local cafe, provides a welcoming and friendly atmosphere for all to enjoy. It creates a wonderful opportunity to become friends with local Koreans and other classmates from all over the world for an exchange of language and culture.



LEXIS STUDENT NIGHT

Koreans have a strong appreciation of the pleasures of dining with friends. Lexis Student Night, a monthly social gathering, brings together both our international and local students for a great evening of Korean food, beer, and soju. There's no better way to break the ice and forge friendships. That's why Lexis Student Night is the highlight of our social calendar.



K-pop Dance

#Korean Culture Class



Korean Calligraphy

#Korean Culture Class



Student Night

#Korean Dining with Friends



King Sejong the Great

#Korean Culture Class



Korean Accessories

#Korean Culture Class



Taekwondo

#Korean Culture Class



Korean Traditional Masks

#Korean Culture Class



Meet Up

*#with Local Koreans
& International Peers*



Korean Kitchen

#Korean Cooking Class



Gyeongbok Palace Activity

#Korean Traditional Experience



Kimchi Museum

#Korean Culture Class



Korean Paper Craft

#Korean Culture Class

LEXIS ACCOMMODATION

At Lexis Korea, we make sure that you have access to comfortable, secure, and affordable accommodation within a short distance from our campuses. Amongst our popular accommodation options are:

STUDENT RESIDENCE

Lexis Student Residence is high quality student accommodation provided for the exclusive use of Lexis Korea students.

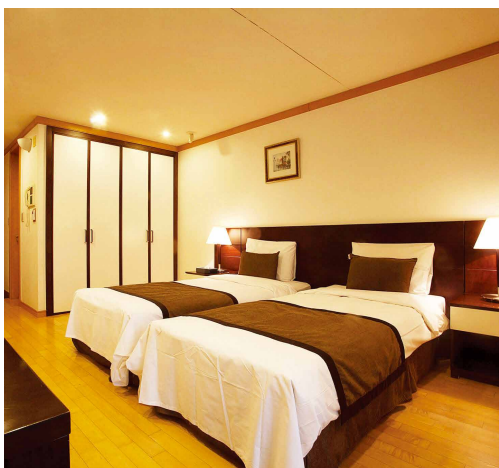
This studio type accommodation includes single, twin and quad bed options that are complete with basic furnishings, en-suite bathroom/toilet, free WIFI, as well as private laundry and kitchen facilities.

The single bed option is suitable for those who appreciate privacy and prefer to live on their own, whereas the twin and quad options are shared rooms, providing students with the opportunity to meet other fellow students and make new friends.



/ SEOUL

The Lexis Seoul Student Residence building is located directly next door to Seoul campus, taking only one minute to walk to our school and less than three minutes to the transport Gangnam Underground station. The area surrounding the Lexis Student Residence has an endless number of cafes, bars, and restaurants for students to select from.



STUDENT RESIDENCE OPTIONS & FACILITIES

Room Type

Single

Twin

Quad

Individual booking is possible for multiple bedrooms.

Facilities



59 ROOM
59 sqm



ENSUITE
BATHROOM
& TOILET



KITCHEN



BALCONY



FREE
WIFI

Furniture & Appliances



BED



DESK
& CHAIR



TV



FRIDGE



MICRO
WAVE



KETTLE



LAUNDRY
MACHINE



HAIR
DRYER



AIR-CON
& HEATER

Distance

1 min

LEXIS
CAMPUS

2 mins

GANGNAM
STATION

1 hr

INCHEON
AIRPORT

Local amenities within walking distance

- Sauna available KRW8,000/day in the basement
- Fitness centre available KRW12,000/day in the basement
- A convenience store and restaurants available on 1st/ground and 2nd floor
- Dry cleaning service available on 2nd floor



Perfect Location

1 minute walk to the campus,
shops and restaurants



Comfortable Stay

With most modern facilities and
building equipped amenities
such as sauna and gym



Various Room Types

Single

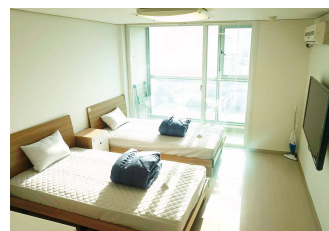
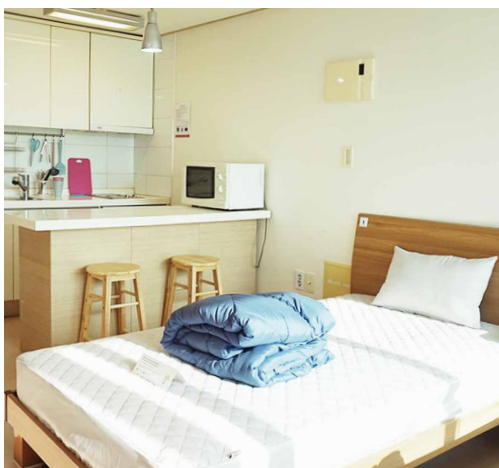
Twin

Quad



/ BUSAN

The Lexis Busan Student Residence building is located directly opposite to Busan campus in Seomyeon, which is only a minute walk from the school and just a short 5-7 minutes to the transport hubs of Seomyeon Station and Jeonpo Station. The area surrounding the Lexis Student Residence has a wide range of cafes, bars and restaurants for students to select from.



STUDENT RESIDENCE OPTIONS & FACILITIES

Room Type

Single

Twin

Quad

Individual booking is possible for multiple bedrooms.

Facilities



43 ROOM
43 sqm



ENSUITE
BATHROOM
& TOILET



KITCHEN



BALCONY



FREE
WIFI

Furniture & Appliances



BED



DESK
& CHAIR



TV



FRIDGE



MICRO
WAVE



KETTLE



LAUNDRY
MACHINE



HAIR
DRYER



AIR-CON
& HEATER

Distance

1 min

LEXIS
CAMPUS

5 mins

SEOMYEON
STATION

5 mins

JEONPO
STATION

1 min

JEONPO
CAFE STREET

40 mins

GIMHAE
INTERNATIONAL
AIRPORT

Local amenities within walking distance

- A convenience store and restaurants available on 1st/ground floor

LEXIS ACCOMMODATION

HOMESTAY

SEOUL | BUSAN



Homestays allow students to live with a local family, experience day-to-day life in Korea, and enjoy amazing home-cooked Korean food! There is no better way to develop your language skills and learn more about this fascinating country than to fully immerse yourself in the culture and society. As with most Koreans, our homestay families are eager to share their culture with our students, and can introduce you to some of the hidden delights of Seoul and Busan.

Some families live in downtown apartments, others in larger homes in the suburbs, but regardless you will be warmly welcomed to the house as a guest, and will have the chance to experience the hospitality for which Koreans are well known for.

HOMESTAY OPTIONS & FACILITIES

Half board

- MON-FRI : BREAKFAST & DINNER
- SAT-SUN : BREAKFAST, LUNCH & DINNER

Bed & Breakfast

- MON-SUN : BREAKFAST ONLY

Homestay rooms are all for single use and include:



Shared Facilities



MINI STUDIO

SEOUL | BUSAN



Lexis Korea can arrange accommodation from a selection of mini-studio locations in both Gangnam and Seomyeon. Mini-studios, or better known as 'goshiwon' to the locals, are low-priced accommodation normally used by university students. Rooms are self-contained, with basic furnishings and a private bathroom. Kitchen and laundry facilities are shared, with most providing free rice, noodles and kimchi.

Please keep in mind however that while mini studios are the cheapest possible private accommodation, the rooms are very small!

Typically, the mini-studios we provide are within a fifteen-minute walk to the Lexis campus, and are a short stroll from a near-endless selection of shops, restaurants and bars. Full CCTV security systems are in place, along with auto-locking doors and on-site security; making mini-studios an ideal option for women travelling alone. Many providers offer 'women only' floors, so please request this if it would make you feel more comfortable.



MINI STUDIO FACILITIES

Mini studio rooms are all for single use and include:



Shared Facilities



Distance



SERVICED APARTMENT

For those wanting a more comfortable stay, serviced apartments offer a higher standard of accommodation. We have affiliated partners in both Seoul and Busan to offer you convenient and comfortable accommodation options. Please do note however that serviced apartments are one of the more expensive options and therefore are more suitable for short term stays.



/ SEOUL - Artnouveau City

We are affiliated with Gangnam Artnouveau City which is located right in the heart of Gangnam, approximately a short 3 minute walk from Lexis Seoul and 5 minutes from Gangnam Station Exit 5. We offer a double room priced at KRW95,000 per night. Bedroom and living room are separable by sliding door, with a fully furnished built-in kitchen and private laundry facilities. There is also a fitness centre provided for guests at no extra charge.

ARTNOUVEAU CITY FACILITIES

Rooms include:



Distance



/ BUSAN - Toyoko Inn

In Busan, we are affiliated with Toyoko Inn which is a 5 minute walk from our Lexis Busan campus. We offer Single Room and Double Room options priced respectively at KRW55,000 and KRW77,000 per night. Breakfast is included within the price.

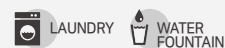


TOYOKO INN FACILITIES

Rooms include:



Shared Facilities



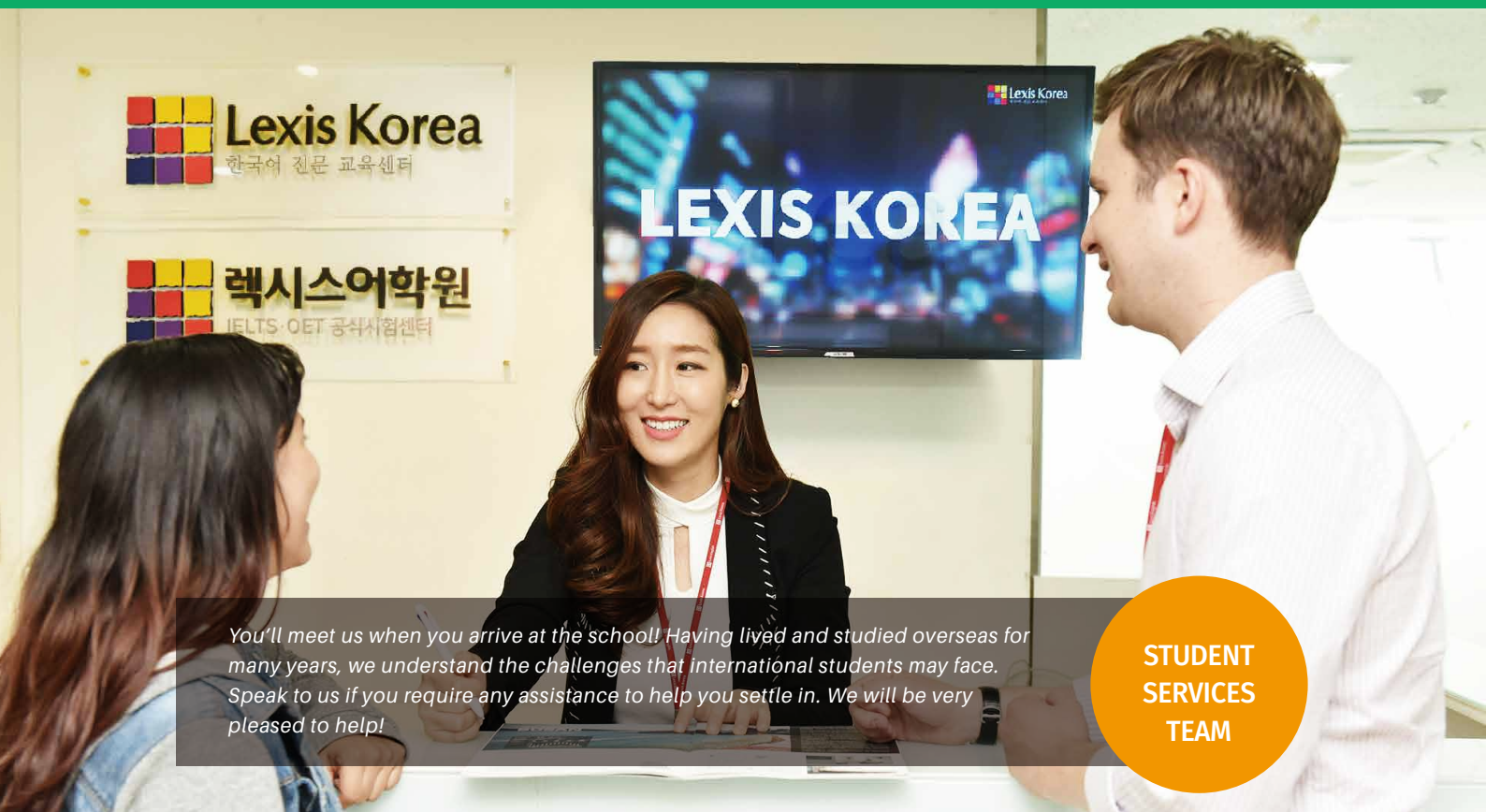
Distance



STUDENT SERVICES

From the time that you decide to study with us until the moment we bid you goodbye, Lexis Korea Student Services staff will be there to assist you with your stay.

To ensure a smooth journey and your safe arrival, we provide Airport Transfers, a comprehensive Arrival Guide and the comfort of a 24/7 emergency line. Once you are with us, we encourage you to meet our Student Services team and get help to make your stay stimulating and fulfilling.



You'll meet us when you arrive at the school! Having lived and studied overseas for many years, we understand the challenges that international students may face. Speak to us if you require any assistance to help you settle in. We will be very pleased to help!

**STUDENT
SERVICES
TEAM**

ASK US ABOUT



ACCOMMODATION



VISA ISSUES



COURSE
EXTENSION



BUYING SIM CARD



FINDING WORK



PUBLIC
TRANSPORTATION
INFORMATION



MEDICAL ISSUES



BOOKING ACTIVITIES



FLIGHT /
HOLIDAY



THE LEXIS KOREA ADVANTAGE CARD



Lexis Korea Advantage Card offers student discounts around our campus location. If you are a current or former Lexis Korea student, you will be able to use this card in Korea, and access great discounts and special offers across a range of providers. Have a look at all the great advantages that Lexis students have access to!

STUDENT REVIEWS



Dana from United States

The teachers are the best part of this experience. They engage the class using various methods to make sure the students understand. They always explain things thoroughly and were very patient with the students. They are fun, yet keep learning a priority. It was also fun to meet students from all around the world with the same goal - learning the Korean language. I wish I could stay much longer I hope to come back and study for much longer next time.



Savannah from Switzerland

My teacher made the class very fun and had a lot of patience with us. She made me want to interact in class and also pay attention. She would introduce a wide variety of topics as well as vocabulary. Classes were never boring. I stayed in the mini studio and the accommodation was also great. Our mini studio manager was very friendly, willing to help and even take us out for activities. The support system in Lexis is very good and I felt well taken care of. Thank you so much for a great time! I also appreciate that I could learn so much and really see my Korean skills improve. I'd love to come again!

Natalie from Canada

Staying in Busan and attending Lexis for the past 5 months has been a huge learning curve and exciting all at the same time. I've met many great people from different countries and made friends that I will never forget. Within the classes of Lexis I could feel myself improving as the weeks went by and as I levelled up. There was a good mixture of speaking Korean along with vocabulary and grammatical writing exercises which gave the lessons diversity and helped me improve my Korean quickly. The teacher I had was exceptional at explaining Korean vocabulary and grammar so that I immediately understood the meaning and was able to use the vocabulary or grammatical concepts properly. When I go home, I know that I will always remember my experiences in Korea and in Lexis Korea, I really hope to one day return.

Emma from Thailand

The first day I came to Lexis Korea, the people were helpful, welcoming and lovely. In class, the teachers are all friendly and it's very nice when the teachers give students their Kakaotalk ID because I feel like I could ask them for help anytime and anywhere I go. I love Lexis Korea very much. Thank you so much for giving me such good experiences and such a fun time in Korea.



Kelly from Australia

The Busan campus is quickly establishing itself as one of the leading Korean language institutes in the country. The teachers are friendly, caring, knowledgeable and always create a positive environment conducive to learning. Studying all day can be tiring, but the times flies because the classes are fun, enjoyable and engaging. My Korean language skills have improved greatly thanks to the wonderful teachers. I highly recommend LEXIS BUSAN.

blog LexisSeoul.com, LexisBusan.com



Facebook.com/LexisKorea



Instagram.com/LexisKorea



Youtube.com/LexisKorea



Twitter.com/LexisKorea



Flickr.com/LexisKorea

LEARN KOREAN FAST&FUN

SEOUL CAMPUS

11F ANY Tower, 7, Gangnam-daero 53-gil, Seocho-gu, Seoul,
South Korea 06626

☎ +82 2 588 4900 ☎ +82 2 581 5353

✉ info@LexisKorea.com

BUSAN CAMPUS

6F DS Tower, 73, Dongcheon-ro, Busanjin-gu, Busan,
South Korea 47295

☎ +82 51 804 4900 ☎ +82 51 804 4955

✉ info@LexisKorea.com

www.LexisKorea.com