

---

UK

---

CANADA

---

NEW ZEALAND

---

FRANCE

---

USA

---

AUSTRALIA

---

SWITZERLAND

---



# LSI - Opening up the world

## UK

### LSI London Central

19-21 Ridgmount Street  
London WC1E 7AH  
Tel. +44 (0)207 467 6500  
Email: lon@LSI.edu

### LSI London Hampstead

13 Lyndhurst Terrace  
London NW3 5QA  
Tel. +44 (0)207 794 8111  
E-mail: ham@LSI.edu

### LSI Brighton - Portland Campus

55-61 Portland Rd  
Brighton BN3 5DQ  
Tel. +44 (0)1273 722 060  
E-mail: bri@LSI.edu

### LSI Brighton - Ventnor Campus

13 Ventnor Villas  
Brighton BN3 3DD  
Tel. +44 (0)1273 722 060  
E-mail: bri@LSI.edu

### LSI Cambridge

41 Tenison Road  
Cambridge CB1 2DG  
Tel. +44 (0)1223 361 783  
E-mail: cam@LSI.edu

### LSI London Ealing

Ealing Green College,  
The Green,  
London W5 5EW  
E-mail: ealing@lsi.edu

## USA

### LSI Berkeley

2015 Center Street  
Berkeley CA 94704  
Tel. +1 510 841 4695  
E-mail: ber@LSI.edu

### LSI San Diego

1706 5th Avenue  
San Diego CA 92101  
Tel. +1 619 234 2881  
E-mail: san@LSI.edu

### LSI Boston

105 Beach Street  
Boston MA 02111  
Tel. +1 617 542 3600  
E-mail: bos@LSI.edu

### LSI New York

40 Rector Street,  
10th Floor,  
Suite 1000  
New York NY 10006  
Tel. +1 212 965 9940  
E-mail: nyc@LSI.edu

## Canada

### LSI Vancouver

2nd Floor  
806 Homer Street  
Vancouver B.C. V6B 2W5  
Tel. +1 604 683 7654  
Fax. +1 604 683 7554  
E-mail: van@LSI.edu

### LSI Toronto

Suite 210,  
1055 Yonge Street  
Toronto ON M4W 2L2  
Tel. +1 416 928 6888  
Fax. +1 416 928 3388  
E-mail: tor@LSI.edu

## New Zealand

### LSI Auckland

Level 1,  
10-12 Scotia Place  
Auckland 1010  
Tel. +64 (0)9 303 3097  
Fax. +64 (0)9 303 3497  
E-mail: auc@LSI.edu

## Australia

### LSI Brisbane

Level 2  
93 Edward Street  
Brisbane QLD 4001  
Tel. +61 (0)7 3221 6977  
Fax. +61 (0)7 3221 6861  
E-mail: bne@LSI.edu

## France

### LSI Paris

23 Rue du Renard  
75004 Paris  
Tel. +33 (0)1 4260 5370  
E-mail: par@LSI.edu

## Switzerland

### LSI Zurich

Kreuzstrasse 36  
8008 Zurich  
Tel. +41 (0)44 251 5889  
Fax. +41 (0)44 251 5805  
E-mail: zur@LSI.edu



Visit [lsi.edu](http://lsi.edu) to find out more about our schools and take a virtual tour

All information correct at the time of printing.  
For the most up to date course information, please visit [www.lsi.edu](http://www.lsi.edu)

# The LSI Experience

"LSI Hampstead provided an excellent environment to learn English and have fun. It was one of the best experiences of my life."

GABRIELLA ILLÉS, TV PRODUCER, HUNGARY



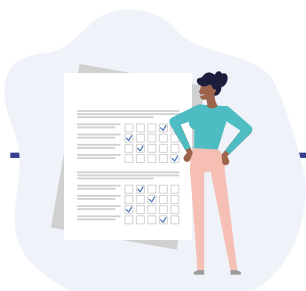
## Your LSI programme starts at home

With E-LSI you can access learning materials and start your academic programme as soon as you book.



## A warm welcome upon arrival

You will arrive to a warm welcome from your LSI host family or at your LSI residence to make sure you are comfortable and get fully settled.



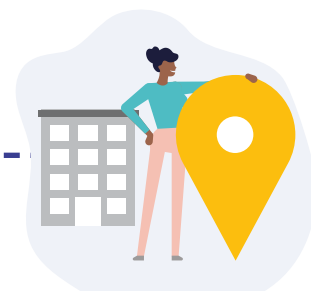
## Continuous appraisal

We continuously monitor your progress through a regular system of testing and customised learning plans. Through E-LSI you can access your academic information, including test scores and tutorial reports.



## First day in school

Our friendly staff will explain everything you need to know about your programme. You'll have a thorough skills test to ensure that we place you into the right class, we'll introduce you to our cultural and social programme and we'll ensure that you meet all your classmates and the school staff.



## Orientation in the school



## Clear and substantiated progress

Entry tests and exit tests, along with regular appraisal from our academic staff show you how much progress you've made during your programme.



## Graduation ceremony

In LSI's graduation ceremony, you'll receive your graduation certificate and celebrate your programme with your new friends

\* Not available in all LSI centres. Please check with the school at the time of booking

For the most up to date course information, levels and dates please visit [www.lsi.edu](http://www.lsi.edu)

# London Central (£UK)

[www.lsi.edu/london](http://www.lsi.edu/london)

## General/Academic/English for Specific Purposes

(Price p/wk)	ACADEMIC TERM ABROAD		ACADEMIC YEAR ABROAD		
No. of weeks:	1-3	4-11	12-15	16-23	24+
Afternoon 10 <sup>^</sup>	150	145			
General 20	280	270	260	240	220
Intensive 24	325	310	295	275	250
Intensive 30	370	340	320	300	265
Pathways			320	300	265
Academic English			320	300	265
English for Business 30*	370	340	320	300	265
TOEFL 30/TOEIC 30/IELTS 30*	370	340	320	300	265
Course price (No. of weeks)		4	10	11	12
Cambridge 30		1360	3400	3740	3840
Medical English (8 weeks max.)					from 340/370
English for Law (8 weeks max.)					from 340/370
English for Teaching: groups (p/wk)					370
English for Teaching: G20 + 5 individuals (p/wk)					570
English for Teaching: G20 + 10 individuals (p/wk)					860
One to One Lesson					58
Plus Courses Supplement: 5/10 lessons					290/580

<sup>^</sup> Not available on a Short Term Study Visa

\* English for Business and TOEFL also available as Intensive 24

## Premium Courses

One-to-one						
No of lessons p/wk:	5	10	20	30	40	50
(Course price)	290	580	1160	1740	2320	2900
Mini Group (Business/General English/Exam Prep)						
No of lessons p/wk:			20	30	40	
(Price p/wk):			1 wk	645	895	1125
			2 wks	625	865	1105
			3 wks	605	840	1080
			4+ wks	585	820	1060
9 Day Compact No of lessons:				82	92	
(Course price)				4756	5336	

## Experiences

(Price p/wk)	
Club 40+	540

## Additional Costs

### EXAM FEES

B2 First / C1 Advanced / C2 Proficiency	175
IELTS	Contact us

### OTHER FEES

Registration fee	80
Placement fee – work experience: Unpaid	750/900
Courier fee	75
Health Insurance (p/wk)	Contact us
Airport transfers:	one way/return
Heathrow/London City	95/170
Gatwick/Stansted/Luton	115/200

## Accommodation

HOMESTAY (1-11 weeks)# per person p/wk	B&B	HB
Twin*	130	170
Single	155	205
<b>Supplements</b>		
Zone 2/Zone 3		50/30
Executive supplement, single room		75
Christmas		45
Summer (Jun 19 - Aug 28)		30
Special diets B&B/HB		15/30

Arrival and departure dates for Homestay: Saturday to Saturday or Sunday to Sunday.

# Discount for 12+ weeks booked and paid for in advance: single room £20 p/wk ; twin room £10 p/wk.

## RESIDENCE

<b>AXO Islington</b> - zone 2 p/wk (4 weeks minimum stay)	
En-suite single room	from 305
<b>Chapter Portobello</b> - zone 2 p/wk (no meals)	
Single studio	from 345
Twin room*	from 190
<b>Drapery Plaza</b> - p/wk (no meals)	
En-suite single room	from 375

\* When two students book for the same start and end date

Other accommodation options available at [www.lsi.edu/accommodation](http://www.lsi.edu/accommodation)

## Additional Course Information

Class size: max 15 students

Lesson duration: 50 mins (45 mins for Premium Courses)

### General Courses, English for Business

Start dates for Elementary to Advanced levels: Each Monday

Start dates for Beginner level: First Monday of Feb, Apr, Jun, Sep, Nov

### Academic English/ IELTS, TOEFL iBT & TOEIC Preparation

Start date: Every Monday. Recommended start dates first Monday of January, April and September

### Pathways/Academic Term Abroad (ATA)/Academic Year Abroad (AYA)

Start date: First Monday of January, April and September

### Cambridge English Exam Preparation

Start dates: B2 First 11 weeks: Jan 4

C1 Advanced 10 weeks: Jan 4

B2 First & C1 Advanced 12 weeks: Mar 21, Sep 12

B2 First & C1 Advanced 4 weeks: Jul 4, Aug 1

C2 Proficiency 12 weeks: Sep 12

Exam dates: B2 First: Mar 19, Jun 11, Jul 29, Aug 25~, Dec 3

C1 Advanced: Mar 11, Jun 11, Jul 30, Aug 26~, Dec 1

C2 Proficiency: Dec 4~

~ Paper based exam

### Medical English, English for Law

8 weeks course. Start July 4

### English for Teaching

Start dates: Every Monday

### Premium Courses

Start dates (One-to-one, Mini Group): Every Monday.

Start dates (9 Day Compact): Every Saturday.

### Club 40+

Start Dates: First Monday of Mar, Apr, May, Sep, Oct, Nov

### Public Holidays

No instruction on the following dates: Jan 3, Apr 15, 18, May 2, Jun 2, 3, Aug 29.

School is closed from Dec 23 2022 to Jan 2 2023 inclusive.

## London Ealing (£UK)

[www.lsi.edu/yl-ealing](http://www.lsi.edu/yl-ealing)

### Junior Courses

Registration fee	80
Programme for ages 12-17 years	(p/wk)
English tuition only	280
Tuition, lunch + activities <sup>1</sup>	500
Programme plus full board homestay in twin room accommodation (for ages 12–17 years):	(p/wk)
In summer	750
Airport transfer required:	
Heathrow/London City (on arrival/round trip)	95/170
Gatwick/Stansted/Luton (on arrival/round trip)	115/200
Check-in service <sup>2</sup>	40

<sup>1</sup> Travel card not included in the programme.

<sup>2</sup> Compulsory fee for unaccompanied minors under 16, optional for juniors aged 16-17 years.

### Start dates

Summer 2022: Every Monday from Jul 4 to Aug 8 (course ends Aug 12) - GROUPS ONLY.

### Additional course information

Standard timetable: Arrivals on Sunday and departures on Saturday.

Maximum booking length for accommodation is 4 weeks (27 nights) for under 16s.

### Junior Courses for Groups

In addition to our published start dates, the school can accept groups for a variety of age ranges at various times throughout the year at our sister centre, London Central. Maximum class sizes for closed groups, subject to negotiation. One group leader may accompany each group of 10–15 students for free (including transfers, accommodation and activities).

## London Hampstead (£UK)

[www.lsi.edu/yl-hampstead](http://www.lsi.edu/yl-hampstead)

### Junior Courses

Registration fee	80
Programme for ages 6-11 and 12-17 <sup>1</sup>	(p/wk)
English tuition only	300
Tuition, lunch + activities (ages 12-17 only) <sup>2</sup>	500
Programme plus full board homestay in twin room accommodation (for ages 12–17 years only) <sup>2</sup> :	(p/wk)
In winter	725
In summer	750
Airport transfer required:	
Heathrow/London City (on arrival/round trip)	95/170
Gatwick/Stansted/Luton (on arrival/round trip)	115/200
Check-in service <sup>3</sup>	40

<sup>1</sup> Students aged 6-11 years must be accompanied by a parent or guardian. The programme for ages 6-11 includes tuition only.

<sup>2</sup> Travel card not included in the programme.

<sup>3</sup> Compulsory fee for unaccompanied minors under 16, optional for juniors aged 16-17 years.

### Start dates

Winter 2022: Every Monday from Jan 4 to Feb 7 (course ends Feb 11) - GROUPS ONLY.

Summer 2022: Every Monday from Jun 27 to Aug 8 (course ends Aug 12).

Winter 2023: Every Monday from Jan 3 to Feb 6 (course ends Feb 10).

### Additional course information

Standard timetable: Arrivals on Sunday and departures on Saturday.

Maximum booking length for accommodation is 4 weeks (27 nights) for under 16s.

### Junior Courses for Groups

In addition to our published start dates, the school can accept groups for a variety of age ranges at various times throughout the year. Maximum class sizes for closed group, subject to negotiation. One group leader may accompany each group of 10–15 students for free (including transfers, accommodation and activities).

## Brighton (£UK)

[www.lsi.edu/brighton](http://www.lsi.edu/brighton)

### General/Academic/English for Specific Purposes

(Price p/wk)	ACADEMIC TERM ABROAD		ACADEMIC YEAR ABROAD		
No. of weeks:	1-3	4-11	12-15	16-23	24+
Afternoon 10 <sup>^</sup>	150	145			
General 20	280	270	260	240	220
Intensive 24	325	310	295	275	250
Intensive 30	370	340	320	300	265
Pathways			320	300	265
Academic English			320	300	265
English for Business 30*	370	340	320	300	265
TOEFL 30/TOEIC 30/IELTS 30*	370	340	320	300	265
Course price (No. of weeks)		4	10	11	12
Cambridge 30		1360	3400	3740	3840
English for Teaching: groups (p/wk)					370
English for Teaching: G20 + 5 individuals (p/wk)					570
English for Teaching: G20 + 10 individuals (p/wk)					860
Course price (No. of weeks)					4
Intensive Cambridge CELTA Teacher Training					from 1300#
One to One Lesson					58
Plus Courses Supplement: 5/10 lessons					290/580

<sup>^</sup> Not available on a Short Term Study Visa

\* English for Business and TOEFL also available as Intensive 24

# Application required, exam fee included in the fee

### Premium Courses

One-to-one						
No of lessons p/wk:	5	10	20	30	40	50
(Course price)	290	580	1160	1740	2320	2900
9 Day Compact No of lessons:				82	92	
(Course price)				4756	5336	

### Additional Costs

#### EXAM FEES

B2 First / C1 Advanced	165
IELTS	Contact us

#### OTHER FEES

Registration fee	80
Placement fee – work experience: Unpaid	750/900
Courier fee	75
Health Insurance (p/wk)	Contact us
Airport transfers:	one way/return
Heathrow	152/257
Gatwick	82/137
Stansted/Luton	177/322

### Accommodation All prices per person p/wk

HOMESTAY (1-11 weeks)#	B&B	HB
Twin*	120	160
Single	140	180
<b>Supplements</b>		
Executive, single room		55
Christmas		45
Summer (Jun 19 - Aug 28)		30
Special diets B&B/HB		15/30

Arrival and departure dates for Homestay: Saturday to Saturday or Sunday to Sunday.

# Discount for 12+ weeks booked and paid for in advance: single room £20 p/wk; twin room £10 p/wk.

### RESIDENCE (1-11 weeks) # per person p/wk

Portland 55 - on-site residence (Self catering per person p/wk)	
Single room, en suite	240
Twin room*, en suite	205
<b>Mountford Student House</b>	
Single room, shared bathroom	220
Twin room*, shared bathroom	210
<b>Supplement</b>	
Summer (Jun 19 - Aug 28)	30

\* When two students book for the same start and end date

# Discount for 12+ weeks booked and paid for in advance: single room £20 p/w; twin room £10 p/wk.

Other accommodation options available at [www.lsi.edu/accommodation](http://www.lsi.edu/accommodation)

### Additional Course Information

Class size: max 15 students

Lesson duration: 50 mins (45 mins for Premium Courses)

#### General Courses, English for Business

Start dates for Elementary to Advanced levels: Each Monday

#### Academic English/ IELTS, TOEFL iBT & TOEIC Preparation

Start date: Every Monday. Recommended start dates first Monday of January, April and September

#### Pathways/Academic Term Abroad (ATA)/Academic Year Abroad (AYA)

Start date: First Monday of January, April and September

#### Cambridge English Exam Preparation

Start dates: B2 First 10 weeks: Jan 4

C1 Advanced 11 weeks: Jan 4

B2 First & C1 Advanced 12 weeks: Mar 21, Sep 12

B2 First & C1 Advanced 4 weeks: Aug 1

Exam dates: B2 First: Mar 19, Jun 11, Aug 25~, Dec 3

C1 Advanced: Mar 11, Jun 11, Aug 26~, Dec 1

~ Paper based exam

#### English for Teaching

Start dates: Every Monday

#### CELTA Teacher Training

Start dates: Feb, Apr, Jun, Aug, Oct

#### Premium Courses

Start dates (One-to-one): Every Monday

Start dates (9 Day Compact): Every Saturday

#### Club 40+

Please contact school for more information

#### Public Holidays

No instruction on the following dates: Jan 3, Apr 15, 18, May 2, Jun 2, 3, Aug 29.

School is closed from Dec 23 2022 to Jan 2 2023 inclusive.

[www.lsi.edu/yl-brighton](http://www.lsi.edu/yl-brighton)

### Junior Courses

Registration fee	80
Programme for ages 6-11 <sup>1</sup> and 12-17 <sup>2</sup> years	(p/wk)
English tuition only	280
Tuition, lunch + activities (ages 12-17 years only) <sup>2</sup>	485
Programme plus full board homestay in twin room accommodation (ages 12-17 years):	(p/wk)
In winter	685
In summer	715
Airport transfer required:	
Heathrow (on arrival/round trip)	155/260
Gatwick (on arrival/round trip)	85/140
Stansted/Luton (on arrival/round trip)	180/325
Check-in service <sup>3</sup>	40

<sup>1</sup> Students aged 6-11 years must be accompanied by a parent or guardian. The programme for ages 6-11 includes tuition only

<sup>2</sup> Travel costs included.

<sup>3</sup> Compulsory fee for unaccompanied minors under 16, optional for juniors aged 16-17 years.

#### Start dates

Winter 2022: Every Monday from Jan 4 to Feb 7 (course ends Feb 11) - GROUPS ONLY.

Summer 2022: Every Monday from Jun 27 to Aug 8 (course ends Aug 12).

Winter 2023: Every Monday from Jan 3 to Feb 6 (course ends Feb 10) - GROUPS ONLY.

#### Additional course information

Standard timetable: Arrivals on Sunday and departures on Saturday.

Maximum booking length for accommodation is 4 weeks (27 nights) for under 16s.

#### Junior Courses for Groups

In addition to our published start dates, the school can accept groups for a variety of age ranges at various times throughout the year. Maximum class sizes for closed group, subject to negotiation.

One group leader may accompany each group of 10–15 students for free (including transfers, accommodation and activities).

## General/Academic/English for Specific Purposes

(Price p/wk)	ACADEMIC TERM ABROAD		ACADEMIC YEAR ABROAD		
No. of weeks:	1-3	4-11	12-15	16-23	24+
Afternoon 10 <sup>^</sup>	150	145			
General 20	280	270	260	240	220
Intensive 24	325	310	295	275	250
Intensive 30	370	340	320	300	265
Pathways			320	300	265
Academic English		340	320	300	265
English for Business 30*	370	340	320	300	265
TOEFL/TOEIC/IELTS*	370	340	320	300	265
Course price (No. of weeks)		4	10	11	12
Cambridge 30		1360	3400	3740	3840
One to One Lesson					58
Plus Courses Supplement: 5/10 lessons					290/580
<sup>^</sup> Not available on a Short Term Study Visa					

\* English for Business and TOEFL also available as Intensive 24

## Premium Courses

One-to-one						
No of lessons p/wk:	5	10	20	30	40	50
(Course price)	290	580	1160	1740	2320	2900
9 Day Compact No of lessons:					82	92
(Course price)					4756	5336

## Experiences

(Price p/wk)						
Club 40+						540

## Additional Costs

## EXAM FEES

B2 First / C1 Advanced	175
IELTS	Contact us

## OTHER FEES

Registration fee	80
Placement fee – work experience: Unpaid	750/900
Courier fee	75
Health Insurance (p/wk)	Contact us
Airport transfers:	one way/return
Heathrow	165/270
Gatwick	185/320
Stansted	105/150
Luton	115/190

## Accommodation All prices per person p/wk

HOMESTAY (1-11 weeks)#	B&B	HB
Twin*	130	170
Single	150	190
<b>Supplements</b>		
Christmas		45
Summer (Jun 19 - Aug 28)		30
Special diets B&B/HB		15/30
Arrival and departure dates for Homestay: Sunday to Sunday.		
# Discount for 12+ weeks booked and paid for in advance: single room £20 p/wk ; twin room £10 p/wk.		
* When two students book for the same start and end date.		
<b>RESIDENCE (person p/wk)</b>		
<b>The Willows (Self catering, all year)</b>		
Single		205
Single with shower		225
Executive single, ensuite		240
Studio		270

Other accommodation options available at [www.lsi.edu/accommodation](http://www.lsi.edu/accommodation)

## Additional Course Information

Class size: max 15 students  
Lesson duration: 50 mins (45 mins for Premium Courses)

## General Courses, English for Business

Start dates for Elementary to Advanced levels: Each Monday

**Academic English/ IELTS, TOEFL iBT & TOEIC Preparation**  
Start date: Every Monday. Recommended start dates first Monday of January, April and September

## Pathways/Academic Term Abroad (ATA)/Academic Year Abroad (AYA)

Start date: First Monday of January, April and September

## Cambridge English Exam Preparation

Start dates: B2 First 10 weeks: Jan 4  
C1 Advanced 11 weeks: Jan 4  
B2 First & C1 Advanced 12 weeks: Mar 21, Sep 12  
B2 First & C1 Advanced 4 weeks: Jul 4  
Exam dates: B2 First: Mar 19, Jun 11, Jul 29, Dec 3  
C1 Advanced: Mar 11, Jun 11, Jul 30, Dec 1

## Premium Courses

Start dates (one-to-one): Every Monday.  
Start dates (9 Day Compact): Every Saturday.

## Club 40+

Start Dates: First Monday of Jan, Mar, May, Sep, Nov

## Public Holidays

No instruction on the following dates: Jan 3, Apr 15, 18, May 2, Jun 2, 3, Aug 29.  
School is closed from Dec 23 2022 to Jan 2 2023 inclusive.

## Junior Courses

Registration fee	80
Programme for ages 9-11 <sup>1</sup> and 12-17	(p/wk)
English tuition only	300
Tuition, lunch + activities (for ages 12-17 only) <sup>2</sup>	540
Programme plus full board homestay in twin room accommodation (ages 12-17 years) <sup>2</sup> :	(p/wk)
In winter	685
In summer	740
Programme plus full board residential accommodation in Abbey College (ages 9-17 years) <sup>2</sup> :	(p/wk)
Single room (summer)	940
Airport transfer required:	
Heathrow (on arrival/round trip)	160/260
Gatwick (on arrival/round trip)	185/320
Stansted (on arrival/round trip)	100/140
Luton (on arrival/round trip)	110/180
Check-in service <sup>3</sup>	40

<sup>1</sup> Students will generally be classed in groups aged 9-12 and 13-17. Classes may occasionally cross these age ranges if of academic benefit. Ages 9-11 are only accepted if accompanied by an elder sibling, guardian or group leader.<sup>2</sup> Travel costs included.<sup>3</sup> Compulsory fee for unaccompanied minors under 16, optional for juniors aged 16-17 years.

## Start dates

Winter 2022: Every Monday from Jan 4 to Feb 7 (course ends Feb 11) - GROUPS ONLY.

Summer 2022: Every Monday from Jul 4 to Aug 8 (course ends Aug 12).

Winter 2023: Every Monday from Jan 3 to Feb 6 (course ends Feb 10) - GROUPS ONLY.

## Additional course information

Standard timetable: Arrivals on Sunday and departures on Saturday.

Maximum booking length for homestay accommodation is 4 weeks (27 nights) for under 16s.

## Junior Courses for Groups

In addition to our published start dates, the school can accept groups for a variety of age ranges at various times throughout the year. Maximum class sizes for closed group, subject to negotiation. One group leader may accompany each group of 10-15 students for free (including transfers, accommodation and activities).

# New York (\$US)

[www.lsi.edu/ny](http://www.lsi.edu/ny)

## General/Academic/English for Specific Purposes

(Price p/wk)	ACADEMIC TERM ABROAD		ACADEMIC YEAR ABROAD		
No. of weeks:	1-3	4-11	12-15	16-23	24+
<b>Afternoon 10</b> ^	220	195			
<b>General 20</b>	410	375	365	355	330
<b>Intensive 25</b>	470	415	405	395	355
<b>Intensive 30</b>	515	470	450	440	385
<b>Pathways</b>			450	440	385
<b>Academic English</b>			450	440	385
<b>English for Business 30</b> *	515	470	450	440	385
<b>TOEFL/TOEIC/IETLS*</b>	515	470	450	440	385
Course price (No. of weeks)					12
<b>Cambridge 30</b>					5400
<b>Medical English</b> (8 weeks max.)					from 470/515
<b>English for Law</b> (8 weeks max.)					from 470/515
<b>English for Teaching: groups</b> (p/wk)					515
<b>English for Teaching: G20 + 5 individuals</b> (p/wk)					860
<b>English for Teaching: G20 + 10 individuals</b> (p/wk)					1310
<b>SAT/GMAT: groups</b> (p/wk)					515
<b>SAT/GMAT: G20 + 5 individuals</b> (p/wk)					860
<b>SAT/GMAT: G20 + 10 individuals</b> (p/wk)					1310
<b>One to One Lesson</b>					90
<b>Plus Courses</b> Supplement: 5/10 lessons					450/900

^ Not available on a Student Visa

\* English for Business and TOEFL also available as Intensive 25

## Premium Courses

<b>One-to-one</b>						
No of lessons p/wk:	5	10	20	30	40	50
(Course price)	450	900	1800	2700	3600	4500
<b>Mini Group</b> (Business/General English/Exam Prep)						
No of lessons p/wk:				20	30	
(Price p/wk):			1 wk	950	1375	
			2 wks	925	1355	
			3 wks	920	1320	
			4+ wks	910	1290	
<b>9 Day Compact</b> No of lessons:				82	92	
(Course price)				7380	8280	

## Experiences

(Price p/wk)	
<b>Club 40+</b>	750

## Additional Costs

### EXAM FEES

B2 First / C1 Advanced	375
------------------------	-----

### OTHER FEES

Registration fee	155
Courier fee	75
Health insurance (p/wk)	25
Airport Transfers: On arrival	150
Round trip	290

## Junior Courses (groups only)

Registration fee	155
Programme plus full board residential accommodation (ages 12-17 years) <sup>1</sup> :	(p/wk)
In summer, shared room	1760
Airport transfer required <sup>2</sup> :	
On arrival	155
Round trip	300
Insurance, p/wk	25

<sup>1</sup> Travel costs included.

<sup>2</sup> For unaccompanied minors prices available on request.

## Accommodation

Placement fee		95
<b>HOMESTAY</b> (Prices per person, p/wk, for 1-11 weeks*)	B&B	HB
Single room (zone 3)	275	345
Twin room** (zone 3)	230	290
<b>Zone supplements</b>		
Manhattan (Single, B&B)		230
Manhattan (Executive Single, B&B)		415
Zone 1		100
Zone 2		75
<b>Other Supplements</b>		
Christmas		60
Summer (Jun 19 - Aug 28)		40
Special diets B&B/HB		25/45

### RESIDENCE (Per person p/wk)

<b>YMCA Residence, West Side</b>	
Single, shared bathroom	from 655
Twin, shared bathroom **	from 425
No meals (include access to sport and fitness facilities).	
** When two students book for the same start and end date	

Other accommodation options available at [www.lsi.edu/accommodation](http://www.lsi.edu/accommodation)

## Additional Course Information

Class size: max 16 students  
Lesson duration: 50 mins

### General Courses, English for Business

Start dates for Elementary to Advanced levels: every Monday.  
Start dates for Beginner level: First Monday of Jan, Mar, May, Jul, Sep, Nov.

### Academic English/IELTS, TOEFL iBT & TOEIC Preparation

Start date: Every Monday. Recommended start dates first Monday of January, April and September

### Pathways/Academic Term Abroad (ATA)/Academic Year Abroad (AYA)

Start date: First Monday of January, April and September

### Cambridge English Exam Preparation

Start dates: B2 First & C1 Advanced 12 weeks: Mar 20, Sep 12

Exam dates: B2 First: Jun 11, Dec 3  
C1 Advanced: Jun 11, Dec 1

### Medical English, English for Law

8 weeks course. Start July 5

### Premium Courses

Start dates (one-to-one, Mini Group): Every Monday.  
Start dates (9 Day Compact): Every Saturday.

### Club 40+

Start Dates: First Monday of Mar, Apr, May, Sep, Oct, Nov.

### Public Holidays

No instruction on the following dates: Jan 17, Feb 21, Apr 15, 18, May 30, Jun 20, Jul 4, Sep 5, Oct 10, Nov 11, 24, 25.

School is closed from Dec 23 2022 to Jan 2 2023 inclusive.

[www.lsi.edu/yl-newyork](http://www.lsi.edu/yl-newyork)

### Start dates

Summer 2022: Every Thursday from Jun 30 to Aug 4 (course ends Aug 10).

### Additional course information

Standard timetable: Arrivals on Wednesdays and departures on Wednesday.

### Junior Courses for Groups

In addition to our published start dates, the school can accept groups for a variety of age ranges at various times throughout the year. Maximum class sizes for closed group, subject to negotiation. One group leader may accompany each group of 10–15 students for free (including transfers, accommodation and activities).



## Boston (\$US)

www.lsi.edu/boston

## General/Academic/English for Specific Purposes

(Price p/wk)	ACADEMIC TERM ABROAD		ACADEMIC YEAR ABROAD		
No. of weeks:	1-3	4-11	12-15	16-23	24+
Afternoon 10 <sup>^</sup>	200	190			
General 20	385	365	355	345	320
Intensive 25	440	405	395	385	345
Intensive 30	495	450	440	430	375
Pathways			440	430	375
Academic English			440	430	375
English for Business*	495	450	440	430	375
TOEFL/TOEIC/IETLS*	495	450	440	430	375
Course price (No. of weeks)					12
Cambridge 30					5280
English for Teaching: groups (p/wk)					495
English for Teaching: G20 + 5 individuals (p/wk)					805
English for Teaching: G20 + 10 individuals (p/wk)					1225
SAT/GMAT: groups (p/wk)					495
SAT/GMAT: G20 + 5 individuals (p/wk)					805
SAT/GMAT: G20 + 10 individuals (p/wk)					1225
One to One Lesson					84
Plus Courses Supplement: 5/10 lessons					420/840

<sup>^</sup> Not available on a Student Visa

\* English for Business and TOEFL also available as Intensive 25

## Premium Courses

One-to-one						
No of lessons p/wk:	5	10	20	30	40	50
(Course price)	420	840	1680	2520	3360	4200

Mini Group (Business/General English/Exam Prep)		
No of lessons p/wk:	20	30
(Price p/wk):		
1 wk	930	1365
2 wks	910	1335
3 wks	895	1300
4+ wks	875	1270

## Additional Costs

## EXAM FEES

B2 First / C1 Advanced	375
------------------------	-----

## OTHER FEES

Registration fee	155
Courier fee	75
Health insurance (p/wk)	25
Airport Transfers: On arrival	125
Round trip	240

## Accommodation

Placement fee		95
<b>HOMESTAY</b> (Prices per person p/wk for 1-11 weeks#)	B&B	HB
Single room	250	315
Twin room**	220	270
<b>Supplements</b> p/wk		
Executive		90
Christmas		60
Summer (Jun 19 - Aug 28)		40
Special diets B&B/HB		25/45

Arrival and departure dates for Homestay: Saturday to Saturday or Sunday to Sunday.  
# Discount for 12+ weeks booked and paid for in advance: single room \$20 p/wk; twin room \$10 p/wk.

## RESIDENCE (Per person p/wk)

<b>ESL Townhouse</b> (no meals, 4 weeks minimum staying)	
Single room, shared bathroom	from 700
Twin room, shared Bathroom**	425
\$200 refundable security deposit charged on arrival at the residence. \$200 Non-Refundable move in fee charged.	
<b>IGH - International Guest House</b> (4 weeks minimum staying)	
Single room, shared bathroom	875
Twin room, shared Bathroom**	490
Saturday to Saturday accommodation only.	
\$200 refundable security deposit charged on arrival at the residence (Cash only).	
** When two students book for the same start and end date.	

Other accommodation options available at [www.lsi.edu/accommodation](http://www.lsi.edu/accommodation)

## Additional Course Information

Class size: max 16 students  
Lesson duration: 50 mins

## General Courses, English for Business

Start dates for Elementary to Advanced levels: every Monday

## Academic English/IELTS, TOEFL iBT &amp; TOEIC Preparation

Start date: Every Monday. Recommended start dates first Monday of January, April and September.

## Pathways/Academic Term Abroad (ATA)/Academic Year Abroad (AYA)

Start date: First Monday of January, April and September.

## Cambridge English Exam Preparation

Start dates: B2 First &amp; C1 Advanced 12 weeks: Mar 20, Sep 12

Exam dates: B2 First: Jun 11, Dec 3

C1 Advanced: Jun 11, Dec 1

## Premium Courses

Start dates (one-to-one, Mini Group): Every Monday.

## Public Holidays

No instruction on the following dates: Jan 17, Feb 21, Apr 15, 18, May 30, Jun 20, Jul 4, Sep 5, Oct 10, Nov 11, 24, 25.

School is closed from Dec 23 2022 to Jan 2 2023 inclusive.

www.lsi.edu/yl-boston

## Junior Courses

Registration fee	155
Programme for ages 12-17 years	(p/wk)
English tuition only	415
Tuition, lunch + activities <sup>1</sup>	820
Programme plus full board homestay in twin room accommodation (for ages 12-17 years) <sup>1</sup> :	(p/wk)
In summer	1225
Airport transfer required <sup>2</sup> :	
On arrival	115
Round trip	220
Insurance, p/wk	25

<sup>1</sup> Travel costs included.<sup>2</sup> For unaccompanied minors prices available on request.

## Start Dates

Summer 2022: Every Monday from Jun 27 to Aug 1 (course ends Aug 5) - GROUPS ONLY.

Residential accommodation may be available for chaperoned groups with students aged 13+.

Details and pricing available upon request.

## Additional course information

Standard timetable: Arrivals on Sunday and departures on Saturday.

## Junior Courses for Groups

In addition to our published start dates, the school can accept groups for a variety of age ranges at various times throughout the year. Maximum class sizes for closed group, subject to negotiation. One group leader may accompany each group of 10-15 students for free (including transfers, accommodation and activities).

## San Diego (\$US)

## General/Academic/English for Specific Purposes

(Price p/wk)	ACADEMIC TERM ABROAD		ACADEMIC YEAR ABROAD		
	1-3	4-11	12-15	16-23	24+
No. of weeks:	1-3	4-11	12-15	16-23	24+
Afternoon 10 <sup>^</sup>	200	190			
General 20	385	365	355	345	320
Intensive 25	440	405	395	385	345
Intensive 30	495	450	440	430	375
Pathways			440	430	375
Academic English			440	430	375
English for Business 30*	495	450	440	430	375
TOEFL/TOEIC/IELTS*	495	450	440	430	375
Course price (No. of weeks)		8	10	11	12
Cambridge 30		3600	4500	4950	5280
English for Teaching: groups (p/wk)					495
English for Teaching: G20 + 5 individuals (p/wk)					805
English for Teaching: G20 + 10 individuals (p/wk)					1225
SAT/GMAT: groups (p/wk)					495
SAT/GMAT: G20 + 5 individuals (p/wk)					805
SAT/GMAT: G20 + 10 individuals (p/wk)					1225
One to One Lesson					84
Plus Courses Supplement: 5/10 lessons					420/840

<sup>^</sup> Not available on a Student Visa

\* English for Business and TOEFL also available as Intensive 25

## Premium Courses

One-to-one	5	10	20	30	40	50
No of lessons p/wk:	5	10	20	30	40	50
(Course price)	420	840	1680	2520	3360	4200
Mini Group (Business/General English/Exam Prep)					20	30
No of lessons p/wk:					20	30
(Price p/wk):				1 wk	930	1365
				2 wks	910	1335
				3 wks	895	1300
				4+ wks	875	1270
9 Day Compact No of lessons:					82	92
(Course price)					6888	7728

## Additional Costs

EXAM FEES	
B2 First / C1 Advanced / C2 Proficiency	375
OTHER FEES	
Registration fee	155
Courier fee	75
Health insurance (p/wk)	25
Airport Transfers: On arrival	130
Round trip	230
Airport transfer U18 supplement	50

## Junior Courses

Registration fee	155
Programme for ages 6-11 <sup>1</sup> and 12-17	(p/wk)
English tuition only (winter)	395
English tuition only (summer)	410
Tuition, lunch + activities (winter, ages 12-17 only) <sup>2</sup>	820
Tuition, lunch + activities (summer, ages 12-17 only) <sup>2</sup>	800
Programme plus full board homestay in shared room accommodation (for ages 12-17 years) <sup>2</sup> :	(p/wk)
In winter	1160
In summer	1215
Airport transfer required <sup>3</sup> :	
On arrival	115
Round trip	220
Insurance, p/wk	25

## Accommodation

Placement fee		95
HOMESTAY (Prices per person p/wk for 1-11 weeks#)	B&B	HB
Single room	240	305
Twin room**	210	260
Supplements		
Executive		90
Christmas		60
Summer (Jun 19 - Aug 28)		40
Special diets B&B/HB		25/45
Arrival and departure dates for Homestay: Saturday to Saturday or Sunday to Sunday.		
# Discount for 12+ weeks booked and paid for in advance: single room \$20 p/wk; twin room \$10 p/wk.		

## RESIDENCE (Per person p/wk)

Residence (No meals)	
Single room, shared bathroom	from 450
Twin/double room, shared Bathroom**	from 250
\$250 refundable security deposit charged by card on arrival at the residence.	
** When two students book for the same start and end date.	

Other accommodation options available at [www.lsi.edu/accommodation](http://www.lsi.edu/accommodation)

## Additional Course Information

Class size: max 16 students. Lesson duration: 50 mins.

## General Courses, English for Business

Start dates for Elementary to Advanced levels: Every Monday

Start dates for Beginner level: First Monday of Jan, Mar, May, Jul, Sep, Nov.

## Academic English/IELTS, TOEFL iBT &amp; TOEIC Preparation

Start date: Every Monday. Recommended start dates first Monday of January, April and September

## Pathways/Academic Term Abroad (ATA)/Academic Year Abroad (AYA)

Start date: First Monday of January, April and September

## Cambridge English Exam Preparation

Start dates: B2 First & C1 Advanced, 10 weeks: Jan 4

B2 First & C1 Advanced 12 weeks: Mar 20, Sep 18

B2 First & C1 Advanced 8 weeks: Jul 5

C2 Proficiency 11 weeks: Sep 18

Exam dates: B2 First: Mar 11, Jun 7, Aug 25, Dec 10

C1 Advanced: Mar 12, Jun 8, Aug 26, Dec 10

C2 Proficiency: Dec 4

All exams are paper based

## Premium Courses

Start dates (one-to-one, Mini Group): Every Monday.

Start dates (9 Day Compact): Every Saturday.

## Public Holidays

No instruction on the following dates: Jan 17, Feb 21, Mar 31, Apr 15, 18, Jul 4, Sep 5, 9, 23, Nov 11, 24, 25.

School is closed from Dec 23 2022 to Jan 2 2023 inclusive.

<sup>1</sup> Students aged 6-11 years must be accompanied by a parent or guardian. The programme for ages 6-11 includes tuition only. English tuition and activities package may be available. Contact school for information and prices.

<sup>2</sup> Travel costs included.

<sup>3</sup> For unaccompanied minors prices available on request.

## Start dates

Winter 2022: Every Monday from Jan 3 to Feb 7 (course ends Feb 11).

Summer 2022: Every Monday from Jun 27 to Aug 8 (course ends Aug 12).

Winter 2023: Every Monday from Jan 3 to Feb 6 (course ends Feb 10).

## Additional course information

Standard timetable: Arrivals on Sunday and departures on Saturday.

## Junior Courses for Groups

In addition to our published start dates, the school can accept groups for a variety of age ranges at various times throughout the year. Maximum class sizes for closed group, subject to negotiation. One group leader may accompany each group of 10-15 students for free (including transfers, accommodation and activities).

# San Francisco/Berkeley (\$US)

[www.lsi.edu/berkeley](http://www.lsi.edu/berkeley)

## General/Academic/English for Specific Purposes

(Price p/wk)	ACADEMIC TERM ABROAD		ACADEMIC YEAR ABROAD		
No. of weeks:	1-3	4-11	12-15	16-23	24+
<b>Afternoon 10</b> <sup>^</sup>	200	190			
<b>General 20</b>	385	365	355	345	320
<b>Intensive 25</b>	440	405	395	385	345
<b>Intensive 30</b>	495	450	440	430	375
<b>Pathways</b>			440	430	375
<b>Academic English</b>			440	430	375
<b>English for Business*</b>	495	450	440	430	375
<b>TOEFL/TOEIC/IETLS*</b>	495	450	440	430	375
Course price (No. of weeks)					12
<b>Cambridge 30</b>					5280
<b>English for Teaching: groups (p/wk)</b>					495
<b>English for Teaching: G20 + 5 individuals (p/wk)</b>					805
<b>English for Teaching: G20 + 10 individuals (p/wk)</b>					1225
<b>SAT/GMAT: groups (p/wk)</b>					495
<b>SAT/GMAT: G20 + 5 individuals (p/wk)</b>					805
<b>SAT/GMAT: G20 + 10 individuals (p/wk)</b>					1225
<b>One to One Lesson</b>					84
<b>Plus Courses Supplement: 5/10 lessons</b>					420/840

<sup>^</sup> Not available on a Student Visa

\* English for Business and TOEFL also available as Intensive 25

## Premium Courses

<b>One-to-one</b>	5	10	20	30	40	50
No of lessons p/wk:						
(Course price)	420	840	1680	2520	3360	4200

<b>Mini Group</b> (Business/General English/Exam Prep)	20		30	
No of lessons p/wk:				
(Price p/wk):			1 wk	930
			2 wks	1335
			3 wks	1300
			4+ wks	1270

## Additional Costs

<b>EXAM FEES</b>	
B2 First / C1 Advanced	375

<b>OTHER FEES</b>	
Registration fee	155
Courier fee	75
Health insurance (p/wk)	25
Airport Transfers: On arrival	115
Round trip	220

## Accommodation

Placement fee		95
<b>HOMESTAY</b> (Prices per person p/wk for 1-11 weeks#)	B&B	HB
Single room	275	345
Twin room**	240	300
<b>Supplements</b>		
Executive		90
Christmas		60
Summer (Jun 19 - Aug 28)		40
Special diets B&B/HB		25/45

Arrival and departure dates for Homestay: Saturday to Saturday or Sunday to Sunday.  
# Discount for 12+ weeks booked and paid for in advance: single room \$20 p/wk; twin room \$10 p/wk.

Other accommodation options available at [www.lsi.edu/accommodation](http://www.lsi.edu/accommodation)

## Additional Course Information

Class size: max 16 students  
Lesson duration: 50 mins

### General Courses, English for Business

Start dates for Elementary to Advanced levels: Every Monday

### Academic English/IELTS, TOEFL iBT & TOEIC Preparation

Start date: Every Monday. Recommended start dates first Monday of January, April and September

### Pathways/Academic Term Abroad (ATA)/Academic Year Abroad (AYA)

Start date: First Monday of January, April and September

### Cambridge English Exam Preparation

Start dates: B2 First & C1 Advanced 12 weeks: Mar 20, Sep 12

Exam dates: B2 First: Jun 11, Dec 3

C1 Advanced: Jun 11, Dec 1

### Premium Courses

Start dates (One-to-one, Mini Group): Every Monday.

### Public Holidays

No instruction on the following dates: Jan 17, Feb 21, Mar 31, Apr 15, 18, Jul 4, Sep 5, 9, 23, Nov 11, 24, 25.

School is closed from Dec 23 2022 to Jan 2 2023 inclusive.

[www.lsi.edu/yl-berkeley](http://www.lsi.edu/yl-berkeley)

## Junior Courses

Registration fee	155
Programme for ages 12-17	(p/wk)
English tuition only	415
Tuition, lunch + activities <sup>1</sup>	820
Programme plus full board homestay in twin room accommodation (for ages 12-17 years) <sup>1</sup> :	(p/wk)
In summer	1240
Airport transfer required <sup>2</sup> :	
On arrival	115
Round trip	220
Insurance, p/wk	25

<sup>1</sup> Travel costs included.

<sup>2</sup> For unaccompanied minors prices available on request.

### Start dates

Summer 2022: Every Monday from Jun 27 to Aug 1 (course ends Aug 5) - GROUPS ONLY.

### Additional course information

Standard timetable: Arrivals on Sunday and departures on Saturday.

### Junior Courses for Groups

In addition to our published start dates, the school can accept groups for a variety of age ranges at various times throughout the year. Maximum class sizes for closed group, subject to negotiation. One group leader may accompany each group of 10-15 students for free (including transfers, accommodation and activities).

# Toronto (\$CD)

[www.lsi.edu/toronto](http://www.lsi.edu/toronto)

## General/Academic/English for Specific Purposes

(Price p/wk)	ACADEMIC TERM ABROAD		ACADEMIC YEAR ABROAD		
No. of weeks:	1-3	4-11	12-15	16-23	24+
<b>Afternoon 10</b> <sup>^</sup>	185	180			
<b>General 20</b>	355	345	325	310	290
<b>Intensive 25</b>	395	385	365	355	320
<b>Intensive 30</b>	430	420	405	390	340
<b>Pathways</b>			405	390	340
<b>Academic English</b>			405	390	340
<b>English for Business*</b>	430	420	405	390	340
<b>TOEFL/TOEIC/IELTS*</b>	430	420	405	390	340
Course price (No. of weeks)			8	10	12
<b>Cambridge 30</b>			3360	4200	4860
<b>Medical English</b> (8 weeks max.)					from 395/430
<b>English for Law</b> (8 weeks max.)					from 395/430
<b>One to One Lesson</b>					95
<b>Plus Courses</b> Supplement: 5/10 lessons					475/950

<sup>^</sup> Not available on a Short Term Study Visa

\* English for Business and TOEFL also available as Intensive 25

## Premium Courses

<b>One-to-one</b>	5	10	20	30	40	50
No of lessons p/wk:						
(Course price)	475	950	1900	2850	3800	4750
<b>Mini Group</b> (Business/General English/Exam Prep)						
No of lessons p/wk:				20	30	
(Price p/wk):				1 wk 1020	1355	
				2 wks 910	1200	
				3 wks 865	1155	
				4+ wks 845	1130	
<b>9 Day Compact</b> No of lessons:				82	92	
(Course price)				7790	8740	

## Experiences

(Price p/wk)	
<b>Club 40+</b>	705

## Additional Costs

### EXAM FEES

B2 First / C1 Advanced	370
------------------------	-----

### OTHER FEES

Registration fee	155
Textbook (Cambridge Exams)	80
Courier fee	100
Health insurance (p/wk)	15
Notary fees for unaccompanied minors (U18)	60
Airport Transfers: On arrival	110
Round trip	205

## Junior Courses

Registration fee	155
Programme for ages 6-11 <sup>1</sup> and 12-17 years	(p/wk)
English tuition only	370
Tuition, lunch + activities (winter, ages 12-17 only) <sup>2</sup>	770
Tuition, lunch + activities (summer, ages 12-17 only) <sup>2</sup>	820
Programme plus full board homestay in twin room accommodation (for ages 12-17 years) <sup>2</sup>	(p/wk)
In winter	1080
In summer	1130
Programme plus full board residential accommodation (for ages 13-17 years, groups only)	(p/wk)
Single room (summer)	1660
Airport transfers <sup>3</sup> :	
On arrival	110
Round trip	205
Insurance, p/wk	15
Custodianship service available (if requested by Canadian Embassy)	60

## Accommodation

Placement fee				195
<b>HOMESTAY</b> (Prices per person p/wk)	B&B	HB	FB	
Single room	210	245	260	
Twin room**	200	235	250	
<b>Supplements</b>				
Christmas				50
Summer (Jun 19 - Aug 28)				35
Special diets B&B/HB				25/45
Executive				75

Arrival and departure dates for Homestay: Saturday to Saturday or Sunday to Sunday.

\*\* When two students book for the same start and end date.

## RESIDENCE (Prices per person p/wk)

<b>Ryerson University ILC</b> (May - Aug)				
Single room, private bathroom				from 550

Other accommodation options available at [www.lsi.edu/accommodation](http://www.lsi.edu/accommodation)

## Additional Course Information

Class size: max 16 students

Lesson duration: 50 min (45 mins for Premium Courses).

### General Courses, English for Business

Start dates for Elementary to Advanced levels: Every Monday

Start dates for Beginner level: First Monday of Feb, Apr, Jun, Sep, Nov

### Academic English/ IELTS, TOEFL iBT & TOEIC Preparation

Start date: Every Monday. Recommended start dates first Monday of January, April and September

### Pathways/Academic Term Abroad (ATA)/Academic Year Abroad (AYA)

Start date: First Monday of January, April and September

### Cambridge English Exam Preparation

Start dates: B2 First & C1 Advanced 10 weeks: Jan 4

B2 First & C1 Advanced 12 weeks: Mar 20, Sep 12

B2 First & C1 Advanced 8 weeks: Jul 4

Exam dates: B2 First: Mar 12, Jun 7, Aug 25, Nov 29

C1 Advanced: Mar 13, Jun 8, Aug 26, Nov 30

All exams are paper based

### Medical English, English for Law

8 weeks course. Start July 4

### Premium Courses

Start dates (one-to-one, Mini Group): Every Monday.

Start dates (9 Day Compact): Every Saturday.

### Club 40+

Start Dates: First Monday of of Jan, Mar, May, Sep, Nov

### Public Holidays

No instruction on the following dates: Jan 3, Feb 21, Apr 15, 18, May 23, Jul 1, Aug 1, Sep 5, Oct 10, Nov 11.

School is closed from Dec 23 2022 to Jan 2 2023 inclusive.

[www.lsi.edu/yl-toronto](http://www.lsi.edu/yl-toronto)

<sup>1</sup> Students aged 6-11 years must be accompanied by a parent or guardian. The programme for ages 6-11 includes tuition only. English tuition and activities package may be available. Contact school for information and prices.

<sup>2</sup> Travel cost included.

<sup>3</sup> Compulsory fee for unaccompanied minors under 16, options for aged 16-17 years.

### Start dates

Winter 2022: Every Monday from Jan 4 to Feb 7 (course ends Feb 11) - GROUPS ONLY.

Summer 2022: Every Monday from Jun 27 to Aug 8 (course ends Aug 12).

Winter 2023: Every Monday from Jan 3 to Feb 6 (course ends Feb 10) - GROUPS ONLY.

### Additional course information

Standard timetable: Arrivals on Sunday and departures on Saturday.

### Junior Courses for Groups

In addition to our published start dates, the school can accept groups for a variety of age ranges at various times throughout the year. Maximum class sizes for closed group, subject to negotiation. One group leader may accompany each group of 10-15 students for free (including transfers, accommodation and activities).

# Vancouver (\$CD)

[www.lsi.edu/vancouver](http://www.lsi.edu/vancouver)

## General/Academic/English for Specific Purposes

(Price p/wk)	ACADEMIC TERM ABROAD		ACADEMIC YEAR ABROAD		
No. of weeks:	1-3	4-11	12-15	16-23	24+
Afternoon 10 <sup>^</sup>	185	180			
General 20	355	345	325	310	290
Intensive 25	395	385	365	355	320
Intensive 30	430	420	405	390	340
Pathways			405	390	340
Academic English			405	390	340
English for Business*	430	420	405	390	340
TOEFL/TOEIC/IELTS*	430	420	405	390	340
Course price (No. of weeks)					12
Cambridge 30					4860
Plus Courses Supplement: 5/10 lessons					475/950
One to One Lesson					95
<sup>^</sup> Not available on a Student Visa					

\* English for Business and TOEFL also available as Intensive 25

## Premium Courses

One-to-one							
No of lessons p/wk:	5	10	20	30	40	50	
(Course price)	475	950	1900	2850	3800	4750	
Mini Group (Business/General English/Exam Prep)							
No of lessons p/wk:						20	30
(Price p/wk):			1 wk	1020	1355		
			2 wks	910	1200		
			3 wks	865	1155		
			4+ wks	845	1130		
9 Day Compact No of lessons:						82	92
(Course price)						7790	8740

## Additional Costs

### EXAM FEES

B2 First/ C1 Advanced / C2 Proficiency	370
--	-----

### OTHER FEES

Registration fee	155
Textbook (Cambridge Exams)	80
Courier fee	100
Health insurance (p/wk)	15
Notary fees for unaccompanied minors (U19)	60
Airport Transfers: On arrival	110
Round trip	205

## Accommodation

Placement fee	195		
<b>HOMESTAY</b> (Prices per person p/wk)	B&B	HB	FB
Single room	210	245	260
Twin room**	200	235	250
<b>Supplements</b>			
Christmas	50		
Summer (Jun 19 - Aug 28)	35		
Special diets B&B/HB	25/45		
Executive	75		

Arrival and departure dates for Homestay: Saturday to Saturday or Sunday to Sunday.

\*\* Only when two students book together for the same dates.

## RESIDENCE (Per person p/wk)

<b>YWCA Residence</b>	
Single room, shared bathroom	from 750
Double room, private bathroom <sup>#</sup>	from 550
Summer Supplement (Jun to Sep)	100
\$220 Non-Refundable move in fee charged.	
<sup>#</sup> When two students book for the same start and end date	

Other accommodation options available at [www.lsi.edu/accommodation](http://www.lsi.edu/accommodation)

## Additional Course Information

Class size: max 16 students  
Lesson duration: 50 min (45 mins for Premium Courses).

**General Courses, English for Business**  
Start dates for Elementary to Advanced levels: Every Monday  
Start dates for Beginner level: First Monday of Feb, Apr, Jun, Sep, Nov

**Academic English/ IELTS, TOEFL iBT & TOEIC Preparation**  
Start date: Every Monday. Recommended start dates first Monday of January, April and September

**Pathways/Academic Term Abroad (ATA)/Academic Year Abroad (AYA)**  
Start date: First Monday of January, April and September

**Cambridge English Exam Preparation**  
Start dates: B2 First & C1 Advanced 12 weeks: Mar 20, Sep 12  
C2 Proficiency: Sep 12

Exam dates: B2 First: Jun 11, Dec 3  
C1 Advanced: Jun 11, Dec 1  
C2 Proficiency: Dec 4~

~ Paper based exam

**Premium Courses**  
Start dates (one-to-one, Mini Group): Every Monday.  
Start dates (9 Day Compact): Every Saturday.

**Public Holidays**  
No instruction on the following dates: Jan 3, Feb 21, Apr 15, 18, May 23, Jul 1, Aug 1, Sep 5, 30, Oct 10, Nov 11.

School is closed from Dec 23 2022 to Jan 2 2023 inclusive.

[www.lsi.edu/yl-vancouver](http://www.lsi.edu/yl-vancouver)

## Junior Courses

Registration fee	155
Programme for ages 12-17 years	(p/wk)
English tuition only	370
Tuition, lunch + activities <sup>1</sup>	820
Programme plus full board homestay in twin room accommodation (for ages 12-17 years) <sup>1</sup> :	(p/wk)
In summer	1130
Airport transfer required <sup>2</sup> :	
On arrival	110
Round trip	205
Insurance, p/wk	15
Custodianship service available (if requested by Canadian Embassy)	60

<sup>1</sup> Travel cost included

<sup>2</sup> Compulsory fee for unaccompanied minors under 16, options for aged 16-17 years.

### Start dates

Summer 2022: Every Monday from Jun 27 to Aug 1 (course ends Aug 5) - GROUPS ONLY

### Additional course information

Standard timetable: Arrivals on Sunday and departures on Saturday.

### Junior Courses for Groups

In addition to our published start dates, the school can accept groups for a variety of age ranges at various times throughout the year. Maximum class sizes for closed group, subject to negotiation. One group leader may accompany each group of 10-15 students for free (including transfers, accommodation and activities).

# Auckland (\$NZ)

## General/Academic/English for Specific Purposes

(Price p/wk)	ACADEMIC TERM ABROAD		ACADEMIC YEAR ABROAD		
No. of weeks:	1-3	4-11	12-15	16-23	24+
<b>Afternoon 10</b> <sup>^</sup>	190	185			
<b>General 20</b>	365	360	355		
<b>Intensive 24</b>	415	410	405	400	360
<b>Evening Intensive 24</b>	415	410	405	400	360
<b>Intensive 30</b>	465	460	455	450	415
<b>Pathways</b>			455	450	415
<b>Academic English</b>			455	450	415
<b>English for Business*</b>	465	460	455	450	415
<b>TOEFL/TOEIC/IELTS*</b>	465	460	455	450	415
Course price (No. of weeks)			9	10	12
<b>Cambridge 30</b>			4140	4600	5460
<b>Medical English</b> (8 weeks max.)					from 415/465
<b>English for Law</b> (8 weeks max.)					from 415/465
<b>English for Aviation G20</b> +5 individuals (p/wk)					865
<b>English for Aviation G20</b> +10 individuals (p/wk)					1365
<b>English for Teaching: G20</b> + 5 individuals (p/wk)					865
<b>English for Teaching: G20</b> +10 (p/wk)					1365
<b>One to One Lesson</b>					100
<b>Plus Courses</b> Supplement: 5/10 lessons					500/1000

<sup>^</sup> Not available on a Student Visa

\* English for Business and TOEFL also available as Intensive 24

## Premium Courses

<b>One-to-one</b>						
No of lessons p/wk:	5	10	20	30	40	50
(Course price)	500	1000	2000	3000	4000	5000

### Mini Group (Business/General English/Exam Prep)

No of lessons p/wk:		
(Price p/wk):	1 wk	1305
	2 wks	1215
	3 wks	1180
	4+ wks	1165

<b>9 Day Compact</b>	No of lessons:		
(Course price)		82	92
		8200	9200

## Experiences (Price p/wk)

<b>Club 40+</b>	865
-----------------	-----

## Additional Costs

### EXAM FEES

B2 First / C1 Advanced / C2 Proficiency	340
B2 Business Vantage	395
TOEFL/IELTS	275/385
TOEIC	265
Late exam booking fee (Cambridge ELA)	125

### OTHER FEES

Registration fee	195
Course materials p/wk up to max. 20 wks	20
Demi au pair placement fee	Contact us
Flying lessons	from 179
Courier fee	115
Health Insurance (p/wk)	Contact us
Airport transfer* (one way)	115

\* Compulsory for U18

## Accommodation

Placement fee	255
---------------	-----

<b>HOMESTAY</b> (Prices per person p/wk)	B&B	HB
Single/Twin room**	230	295
Single room under 18s		305

### Supplements

Christmas	75
Executive Supplement	75
Special diets B&B/HB	35/65

Arrival and departure dates for Homestay: Saturday to Saturday or Sunday to Sunday.

### RESIDENCE (per person p/wk)

<b>City Lodge</b> (No meals)	
Single room, private bathroom	from 350
Double room**, private bathroom	from 399
Twin room (2 beds)**	from 420

<b>YMCA</b> (no meals)	
Single room	280

\*\* When two students book for the same start and end date.

Other accommodation options available at [www.lsi.edu/accommodation](http://www.lsi.edu/accommodation)

## Additional Course Information

Class size: max 16 students  
Lesson duration: 50 mins (45 mins for Premium Courses)

### General Courses, English for Business

Start dates for Elementary to Advanced levels: Every Monday  
Start dates for Beginner level: First Monday of Jan, Mar, May, Jul, Sep, Nov

### Evening Intensive 24

Start dates for Pre-Intermediate to Advanced: Every Monday.  
Beginners and Elementary levels will need to study in the morning programme until reaching an acceptable level.

### Academic English/IELTS, TOEFL iBT & TOEIC Preparation

Start date: Every Monday. Recommended start dates first Monday of January, April and September.

### Pathways/Academic Term Abroad (ATA)/Academic Year Abroad (AYA)

Start date: First Monday of January, April and September

### Cambridge English Exam Preparation

Start dates: B2 First & C1 Advanced 10 weeks: Jan 4  
B2 First & C1 Advanced 12 weeks: Mar 20, Sep 12  
C2 Proficiency 9 weeks: Jan 4  
C2 Proficiency 12 weeks: Sep 12  
Exam dates: B2 First: Mar 11, June 7, Nov 29  
C1 Advanced: Mar 12, Jun 8, Nov 30  
C2 Proficiency: Mar 5, Dec 1

### Medical English, English for Law

8 weeks course. Start July 4

### English for Aviation

Start date: Every Monday.

### Premium Courses

Start dates (one-to-one, Mini Group): Every Monday  
Start dates (9 Day Compact): Every Saturday

### Club 40+

Start Dates: First Monday of of Jan, Mar, May, Sep, Nov

### Public Holidays

No instruction on the following dates: Jan 3, 4, 31, Feb 7, Apr 15, 18, 25, Jun 6, 24, Oct 24, Dec 25, 26.

School is closed from Dec 19 2022 to Jan 3 2023 inclusive.

## Brisbane (\$AU)

www.lsi.edu/brisbane

## General/Academic/English for Specific Purposes

(Price p/wk)	ACADEMIC TERM ABROAD		ACADEMIC YEAR ABROAD		
	1-3	4-11	12-15	16-23	24+
No. of weeks:	1-3	4-11	12-15	16-23	24+
<b>Afternoon 10</b> ^	190	180			
<b>General 20</b> (Up to 17 wks) ^	355	340	330	320	
<b>Intensive 24</b>	415	405	395	370	355
<b>Intensive 30</b>	455	450	445	420	395
<b>Pathways</b>			445	420	395
<b>Academic English</b>			445	420	395
<b>English for Business*</b>	455	450	445	420	395
<b>TOEFL/TOEIC/IETLS*</b>	455	450	445	420	395
Course price (No. of weeks)				10	12
<b>Cambridge 30</b>				4500	5340
<b>One to One Lesson</b>					110
<b>Plus Courses</b> Supplement: 5/10 lessons					550/1100

^ Not available on a Student Visa

\* English for Business and TOEFL also available as Intensive 24

## Premium Courses

One-to-one	5	10	20	30	40	50
No of lessons p/wk:	5	10	20	30	40	50
(Course price)	550	1100	2200	3300	4400	5500

## Additional Costs

## EXAM FEES

B2 First / C1 Advanced	390/400
IELTS	Contact us

## OTHER FEES

Registration fee	235
Course materials p/wk (up to a max. of 20 wks)	15
Demi au pair/Au pair placement fee (up to 12 weeks)	Contact us
Courier fee <sup>#</sup>	75
Overseas student health Insurance (p/wk)	Contact us
Airport transfers* (one way) <sup>#</sup>	120

\* Compulsory for U18

<sup>#</sup> Prices may go up once the borders re-open

## Accommodation

Placement fee		260
<b>HOMESTAY</b> (Prices per person p/wk)	B&B	HB
Single/Twin room**	205	270
<b>Supplements</b>		
U18 Full Board (p/wk)		85
Executive, ensuite		55
Special diets B&B/HB		40/55
Arrival and departure dates for Homestay: Saturday to Saturday or Sunday to Sunday.		
<b>RESIDENCE</b> (per person p/wk)		
<b>Student One</b>		
Single room		from 315

\*\* When two students book for the same start date.

Other accommodation options available at [www.lsi.edu/accommodation](http://www.lsi.edu/accommodation)

## Additional Course Information

Class size: max 16 students

Lesson duration: 50 mins (45 mins for Premium Courses)

## General Courses, English for Business

Start dates for Elementary to Advanced levels: Every Monday

Start dates for Beginner level: First Monday of Jan, Mar, May, Jul, Sep, Nov

## Evening Intensive 24

Start dates for Pre-Intermediate to Advanced: Every Monday.

Beginners and Elementary levels will need to study in the morning programme until reaching an acceptable level.

## Academic English/IELTS, TOEFL iBT &amp; TOEIC Preparation

Start date: Every Monday. Recommended start dates first Monday of January, April and September

## Pathways/Academic Term Abroad (ATA)/Academic Year Abroad (AYA)

Start date: First Monday of January, April and September

## Cambridge English Exam Preparation

Start dates: B2 First &amp; C1 Advanced 10 weeks: Jan 4

B2 First &amp; C1 Advanced 12 weeks: Sep 12

Exam dates: B2 First: Mar 11, Nov 29

C1 Advanced: Mar 12, Nov 30

## English for Aviation

Start date: Every Monday.

## Premium Courses

Start dates (one-to-one, Mini Group): Every Monday.

Start dates (9 Day Compact): Every Saturday

## Public Holidays

No instruction on the following dates: Jan 3, 26, Apr 15, 18, 25, May 2, Aug 10, Oct 3.

School is closed from Dec 19 2022 to Jan 2 2023 inclusive.

## General/Academic

(Price p/wk)	ACADEMIC TERM ABROAD		ACADEMIC YEAR ABROAD		
No. of weeks:	1-3	4-11	12-15	16-23	24+
<b>Afternoon 10</b> ^	180	165			
<b>General 20</b> #	350	315	300	275	260
<b>Intensive 24</b>	400	365	345	320	295
<b>Intensive 30</b>	445	410	390	365	330
<b>Pathways</b>			390	365	330
Course price (No. of weeks)		2	4	8	12
<b>DEL F</b>				3280	
<b>CCIP</b>				3280	
<b>TEF</b> (2 wks+)		890	1640	3280	4680
<b>One to One Lesson</b>					95
<b>Plus Courses Supplement: 5/10 lessons</b>					475/950

^ Not available on a Student Visa  
# Not available to student visa holders from some countries. Check with your embassy.

## Premium Courses

<b>One-to-one</b>						
No of lessons p/wk:	5	10	20	30	40	50
(Course price)	475	950	1900	2850	3800	4750
<b>9 Day Compact</b> No of lessons:				82	92	
(Course price)				7790	8740	

## Experiences

(Price p/wk)	
<b>Cooking</b> (2 wks)	920
<b>History of Art</b> (2 wks)	1005

## Additional Costs

## EXAM FEES

DEL F A2/B1	235
DEL F B2	290
e-TEF Compulsory	135
e-TEF Optional	115

## OTHER FEES

Registration fee	95
University placement support	750
Courier fee	115
Course materials p/wk up to max. 20 wks	10
Airport transfers (one way): Roissy CDG/Orly	110
Beauvais	Prices on request

## Accommodation

Placement fee			95
<b>HOMESTAY</b> - zones 1-2 (Prices per person p/wk)	B&B	Semi HB*	HB
Single room	240	305	325
Twin room**	215	270	300
<b>Supplements</b>			
Executive, single room (private shower only)			40
HB is compulsory for U18s Arrival and departure dates for Homestay: Sunday to Sunday. * No evening meal on Fri and Sat ** When two students book for the same start date			
<b>RESIDENCE</b>			
<b>Mije Le Marais</b> (Half board#) per person, p/wk			
Dormitory room (4-10 people)			380
High season supplement (Feb - Jul)			65
# In August changes to breakfast only			

Other accommodation options available at [www.lsi.edu/accommodation](http://www.lsi.edu/accommodation)

## Additional Course Information

Class size: max 16 students  
Lesson duration: 50 mins (45 mins for Premium Courses)

## General Courses

Start dates for Elementary to Advanced levels: Every Monday  
Start dates for Beginner level: First Monday of every month

## Evening Courses: French, English

Starts dates in January, April, July and September.  
These courses are offered to local residents only.

## DEL F &amp; CCIP

Start date: Contact LSI Paris

## TEF

Start date: Every Monday

## Pathways/Academic Term Abroad (ATA)/Academic Year Abroad (AYA)

Start date: Every Monday. Recommended start dates first Monday of January, April and September

## Premium Courses

Start dates (One-to-one): Every Monday  
Start dates (9 Day Compact): Every Saturday

## French with Cooking

Start Dates: Jan 10, Jun 6, Jul 4, Aug 1

## French with History of Art

Start Dates: Mar 14, Jun 20, Jul 18, Sep 19

## Public Holidays

No instruction on the following dates: Apr 18, May 26, Jun 6, Jul 14, Aug 15, Nov 1, 11.  
School is closed from Dec 19 2022 to Jan 1 2023 inclusive.

## Junior Courses (groups only)

Registration fee	95
Programme for ages 12-17	(p/wk)
French tuition only	350
Tuition, lunch + activities	815
Programme plus full board accommodation in the Mije Residence (for ages 13-17 years):	(p/wk)
Shared room	1340
Airport transfer required:	
Airport transfers (one way): Roissy CDG/ Orly	100
Beauvais	Prices on request

## Start dates

Every Monday from Jul 5 to Jul 26 (course ends Jul 30).

## Additional course information

Standard timetable: Arrivals on Sunday and departures on Saturday.

## Junior Courses for Groups

In addition to our published start dates, the school can accept groups for a variety of age ranges at various times throughout the year. Maximum class sizes for closed group, subject to negotiation. One group leader may accompany each group of 10-15 students for free (including transfers, accommodation and activities).



## Zurich (CHF)

www.lsi.edu/zurich

## General/Academic

(Price p/wk)	ACADEMIC TERM ABROAD		ACADEMIC YEAR ABROAD		
No. of weeks:	1-3	4-11	12-15	16-23	24+
<b>Afternoon 10</b> ^	245	225			
<b>General 20</b>	475	435	415	395	325
<b>Intensive 30</b>	620	590	575	545	465
Course price (No. of weeks)	12				
<b>Goethe-Zertifikat B1</b>	6900				
<b>Goethe-Zertifikat B2</b>	6900				
<b>One to One Lesson</b>	104				
<b>Plus Courses</b> Supplement: 5/10 lessons	520/1040				

^ Not available on a Student Visa

## Premium Courses

<b>One-to-one</b>						
No of lessons p/wk:	5	10	20	30	40	50
(Course price)	520	1040	2080	3120	4160	5200
<b>9 Day Compact</b> No of lessons:	82					92
(Course price)	8528					9568

## Experiences

(Price p/wk)	
<b>Club 40+</b>	795

## Additional Costs

## EXAM FEES

Goethe-Zertifikat B1	290
Goethe-Zertifikat B2	350

## OTHER FEES

Registration fee	125
Course materials p/wk up to max 20 wks	15
Courier fee	165
Airport Transfers: On arrival	155
Round trip	275

## Accommodation

Homestay placement fee	125
------------------------	-----

<b>HOMESTAY</b> (Prices per person p/wk)	B&B	HB
Single room	340	430
Twin room*	265	335

## Supplements

Executive single/twin room	85/65
----------------------------	-------

HB is compulsory for U18s

Arrival and departure dates for Homestay: Sunday to Sunday.

\* When two students book for the same start and end date

## RESIDENCE

LSI can advise on residences and availability but students are required by Swiss law to make bookings directly with the accommodation provider

## Maximilianeum 13 (self-catering) per person, p/month

Single room	590-730
Single room with balcony	800

Other accommodation options available at [www.lsi.edu/accommodation](http://www.lsi.edu/accommodation)

## Additional Course Information

Class size: max 12 students

Lesson duration: 45 mins

## General Courses

Start dates for Elementary to Advanced levels: Every Monday

Start dates for Beginner level for General 20: First Monday of every month

## Pathways/Academic Term Abroad (ATA)/Academic Year Abroad (AYA)

Start date: Every Monday. Recommended start dates first Monday of January, April and September

## Goethe-Zertifikat B1 (ZD), B2 (GZ)

Start dates: Feb 7, Apr 11, Jun 7, Sep 5.

Exam dates: Apr 23-30, Jun 25-Jul 5, Aug 20-27, Nov 19-26.

## Premium Courses

Start dates (One-to-one): Every Monday

Start dates (9 Day Compact): Every Saturday

## Club 40+

Start dates: First Monday of every month

## Public Holidays

No instruction on the following dates: Jun 1-2, Apr 15, 18, May 1, 26, Jun 6, Aug 1.

School is closed from Dec 19 2022 to Jan 2 2023 inclusive.

# LSI Terms and Conditions

## CONDITIONS OF ENROLMENT

### 1. Application

Please send the signed enrolment form to your chosen LSI school or LSI representative with the enrolment fee and, if applicable, the courier fee. Students over 18 (19 in Vancouver) must sign the enrolment form to say that they have read and agree with these terms and conditions. The parents or guardians of students under 18 (19 in Vancouver) must read and also sign the enrolment form on their behalf. Your privacy is important to us. Please note that by submitting your personal data to us, you are accepting the terms described in our privacy policy, which can be found at: [www.lsi.edu/privacy](http://www.lsi.edu/privacy)

### 2. Payment conditions

All course fees must be paid in full no later than 30 days before the course starts. If a booking is made less than 30 days before the course starts, the fees are immediately payable. If payment in full has not been received, you will not be allowed to start your course.

**Australia:** For individual courses longer than 24 weeks, 50% of tuition fees and 100% of all other fees must be paid in full no later than 30 days before the course starts. If a booking is made less than 30 days before the course starts, the fees are immediately payable. The remainder of the tuition fees is required two weeks before the start of the second study period of any individual course.

**New Zealand:** All student fees are to be deposited in the following account: Language Studies International (NZ) Ltd – Student Fees Trust Account (details on invoice). In the event of insolvency, regulatory closure or withdrawal, or partial withdrawal of accreditation, LSI students may apply to dfk Oswin Griffiths Carlton for a refund of unused fees. Please post claims to LSI Student Fees Trust, dfk Oswin Griffiths Carlton, Level 4, 52 Symonds St, Auckland 1010, NZ

### 3. Bank charges

LSI reserves the right to charge up to an additional 2.75% processing fee for all credit card payments. For payments made via bank transfer, LSI reserves the right to charge an additional fee to cover bank charges. In both these cases, students will be informed of any such fees at the time of purchase.

### 4. Visa information

It is the responsibility of the student to arrange all applicable travel permits or visas and to have a valid passport and leave to remain for the whole period of study. The student may be asked to make payment in full prior to the issuing of any of the visa documentation referred to below. LSI is not liable for any decisions made by the Immigration departments of the countries concerned.

**UK:** If your application is successful, we will provide a Confirmation of Acceptance of Studies (Tier 4 GSV and CSV applicants only). Tier 4 applicants must provide a Secure English Language Test (SELT) to establish their level of English is appropriate before they apply for their visa. Students whose level of English is lower than intermediate should use the Student Visitor route SVV or ESVV. See the following website for further details: [www.ukba.homeoffice.gov.uk/studyingintheuk](http://www.ukba.homeoffice.gov.uk/studyingintheuk)

**USA:** Once we have received your application, we will send a Proof of Funds form, which must be completed in order for LSI to issue you a Certificate of Eligibility (Form I-20), which is required in order to apply for a student visa at the US Consulate.

**Canada:** We will provide you with an invitation letter to assist you with your visa application.

**New Zealand:** In accordance with government regulations, visa support (Fees Receipt and Acceptance Letter) is only issued by LSI when full payment has been received. Full details of visa and permit requirements, advice on rights to employment in New Zealand while studying, and reporting requirements are available through the New Zealand Immigration Service and can be viewed on their website at: [www.immigration.govt.nz](http://www.immigration.govt.nz). We strongly recommend LSI NZ students to check information on this website, including but not limited to, medical certificate requirements associated with visa applications. By agreeing to our Terms & Conditions upon enrolment, LSI NZ students are confirming that they have been made aware of information found on this website.

**Australia:** Visa application forms (Confirmation of Enrolment) may not be issued by the school until full payment has been received and the enrolment agreement has been signed and returned. The enrolment agreement includes reference to the pre-departure and grievance procedures information and can be found on our website: [www.lsi.edu](http://www.lsi.edu)

**Switzerland:** We recommend you check the CH Immigration website for the most up to date information about Visas and Immigration regulations. For courses which are longer than 12 weeks, a student visa must be obtained prior to entry into Switzerland. Fees must be paid in advance in order to obtain the documents required for the student visa application. Please visit the website: [www.bfm.admin.ch/bfm/en/home.html](http://www.bfm.admin.ch/bfm/en/home.html) for full information about visa applications and travelling to Switzerland. The student visa application process for Zurich takes at least 3 months to complete.

### 5. Courier fees

If you enrol on a course in the USA less than 30 days before the course start date and require an I-20, a courier fee of US\$65 will be charged to cover the expedition of visa documentation. If you enrol more than 30 days before the course start date, documentation will be sent by normal postal service, unless you request and pay for the courier service. In all other countries, a courier service is available on request. UK: £75, Canada: CAD\$100, New Zealand: NZ\$115, Australia: AU\$75, France: €115, Switzerland: CHF165

### 6. Under 18 year olds (19 in Vancouver)

LSI delivers adult courses (except for programmes advertised as being for Juniors). Therefore, students aged 16 and 17 will be attending classes and sharing facilities with students aged 18 and over. Under 18 year olds may be required to pay a guardian fee, provide custodianship documents, live in LSI-approved accommodation, book LSI's airport transfer service and purchase insurance. All students under 18 (19 in Vancouver) must provide

a signed Parental Consent form prior to arrival, and for Canada they must also provide a signed Health Declaration and excursion waiver form.

**New Zealand:** Students under the age of 18 staying in family accommodation must book half-board and a return airport transfer. Unless otherwise requested by a parent or guardian, students under the age of 18 staying in family accommodation will be expected to return to their accommodation by no later than 22.00 hours each evening.

### 7. Health declaration

Students must report on their enrolment form any mental or physical illness, allergy, disability or condition and details of any associated medicines that may interfere with their ability to successfully complete their programme, that may impact the health and well-being of any other student, host or staff member, that may require monitoring, treatment or emergency intervention of any kind during the student's anticipated period of enrolment, or that may require special accommodations. LSI reserves the right to reject an applicant or terminate a student's enrolment in the programme if the student's continued participation represents a risk to their health and safety or to the health and safety of other students or staff, or if, notwithstanding reasonable accommodations, in the opinion of LSI, the student's physical or mental condition makes the student unable or unlikely to successfully complete their programme. Any refunds in such circumstances will be made at the discretion of LSI.

**Immunizations:** In order to register, all students must have had the required immunizations, subject to the current guidelines of local medical authorities where LSI schools operate. It is the student's responsibility to ensure that they have had the applicable immunizations before departure and they may be required to provide evidence upon arrival. More information about immunizations currently required can be obtained from the local LSI school.

### 8. Additional services

Any additional services (transfers, travel, laundry, telephone costs, excursions, medical costs, special diet, exam fees, change of accommodation and enrolment amendments) are not included in any fees unless specifically stated on a valid invoice.

### 9. Twin accommodation

At LSI's discretion, students may be required to book single room accommodation instead of twin room accommodation.

### 10. Travel and medical insurance

Travel and medical insurance is strongly recommended at all LSI schools for the duration of your stay, regardless of your course length or course/visa type. For some programme or visa types, insurance is compulsory (please check with the school for further details). It is your responsibility to ensure that you have the appropriate cover before departure and for the duration of your stay. Students may be required to show proof of medical insurance at the school upon arrival and may not be allowed to commence a course until satisfactory medical insurance has been obtained.

Travel and medical insurance can be purchased from a third party through LSI when booking. Details of what this covers are available from your LSI representative. You are responsible for the belongings which you bring with you to LSI schools or accommodation and for taking out insurance for your own possessions.

**Australia:** The Australian government requires all students on Student Visas to join the Overseas Student Health Cover (OSHC) scheme, a health insurance plan for overseas students in Australia. Payment of the compulsory OSHC must cover the duration of the student's visa and be made before a visa can be issued.

**New Zealand:** Most international students are not entitled to publicly funded health services while in New Zealand. If you receive medical treatment during your visit, you may be liable for the full costs of that treatment. Full details on entitlements to publicly funded health services are available through the Ministry of Health and can be viewed on their website at [www.moh.govt.nz](http://www.moh.govt.nz). In addition, The Accident Compensation Corporation provides accident insurance for all New Zealand citizens, residents and temporary visitors to New Zealand, but you may still be liable for all other medical and related costs. Further information can be viewed on the ACC website at [www.acc.co.nz](http://www.acc.co.nz).

**Switzerland:** We recommend all students staying for periods up to 3 months apply for full travel and medical insurance before leaving their home country. Once a student is at the school, we provide assistance to those wishing to apply for Swiss medical insurance for periods of study extending beyond this initial 3 months.

### 11. Postponement

In the event of a course postponement, you may be re-booked at the rates currently in effect at the time of re-booking. 3 postponements will be free of charge, while upon a 4th postponement request, LSI will charge a postponement fee, an amount equivalent to the registration fee.

### 12. Special Offers

Special Offers must be booked and paid for prior to the stated expiration date. The relevant special offer code must be provided at the time of booking. Promotion prices apply to new enrolments only. Existing enrolments cannot be cancelled and rebooked at the promotion price. Only one special offer is valid per enrolment. Special offers cannot be combined. All special offers are subject to availability and are subject to change.

## GENERAL

### 1. Rules and regulations

Students' arrangements with LSI are governed by the law of the country where the particular school attended is located.

### 2. Programme changes

LSI reserves the right to change course dates, course curricula, course schedules, tutors, locations and programmes at any time at its discretion. In cases where the course is rescheduled prior to the start of the first course and the new date is unacceptable to the student, all fees will

be refunded. However fees will not be refunded for changes to weekly timetables.

### 3. Arrivals and departures

Depending on the school, accommodation is booked from either Saturday or Sunday before the course start date until the Saturday or Sunday after the course end date. Please check with the individual school for details. A partial week may be counted as 1 week's accommodation. Students arriving between 22:30 – 6:00 may be asked to book alternative accommodation in a hotel on their first night due to late/early arrival at accommodation, or be charged an extra night of accommodation. Certain residences may also have set arrival times. Please check with the school for further details.

### 4. Residential housing deposit

A refundable deposit may be charged on arrival to students taking residential accommodation. The deposit is returned unless there is damage, loss or extra cleaning to be paid for on the student's departure. In some cases the deposit may be non-refundable if the booking is cancelled. Please refer to our various accommodation brochures for further details.

### 5. Late arrivals, vacations and absences

If you begin your enrolment late or are absent during your course, no refund will be made for the time missed. Periods of absence cannot be made up with a free extension of the course. Vacation dates are pre-built into the Academic Year and students cannot make changes to these dates. Breaks taken at other times will be marked as periods of absence. For other courses, granting of any Session Breaks after the course has started will be at the discretion of individual schools, according to visa regulations, and may incur a change fee (except in the USA) or be marked as a period of absence.

### 6. Public holidays

Classes are normally not held and most school facilities are closed on public holidays. All published course start dates fall on a Monday. If the Monday is a public holiday, the start date will fall on a Tuesday. Compensation will not be made for classes not offered on public holidays.

### 7. Meals and classes missed

No refunds or substitutions will be made for meals or classes missed due to exams, excursions, internships, first day orientation or other obligations that fall outside the normal schedule.

### 8. Substitution policy

If, after the placement test taken on arrival at the school, a student is found to be at a level which is not appropriate for their booked course, the school reserves the right to place the student in an appropriate level class, or LSI centre, which may have fewer lessons and a different curriculum. Students who do not have the ability to follow any course on offer may be required to terminate their studies with LSI. We also reserve the right to cancel courses at short notice due to insufficient demand.

### 9. Books and learning materials

All books and learning materials will be made available to students during their course. Unless otherwise stated, students share class sets of course books and receive photo copies.

In New Zealand, Australia, Canada, France & Switzerland a materials fee is charged. New Zealand: NZ\$20 p/wk (max 20 weeks), Australia: AU\$15 p/wk (max 20 weeks), Canada: CA\$75 (Cambridge courses), France: €10 p/wk (max 20 weeks) and Switzerland: CHF15 p/wk (max 20 weeks)

### 10. Duration of lessons/timetable/class sizes

All English lessons are 50 minutes in duration unless otherwise stated. Courses run from Monday to Friday and lessons are scheduled in the morning or the afternoon. LSI cannot guarantee a specific timetable. Maximum class sizes are listed in the brochure and are correct at the time of print. For closed groups, maximum class sizes are subject to negotiation.

### 11. LSI Level Policy

Through a rigorous system of skills testing, students are organised into classes with the other students in the school who have the closest equivalent language level. LSI operates up to six different levels, from Beginner to Advanced, which have been closely matched to the Common European Framework, TOEFL iBT, TOEIC, IELTS and University of Cambridge examinations. To reach each level students must master specific level objectives, demonstrated through test scores and class participation. Subject to student numbers, and ensuring the learning outcomes of every student in the class, LSI may operate bridge classes where two LSI levels are taught together.

### 12. Electives

Electives refer to the various options offered as part of LSI's Intensive 24, 25 and 30 lessons per week programmes. Electives include, but are not limited to, TOEFL iBT, TOEIC, IELTS, English for Business and Fluency. For a full list of electives available, please refer to the school pages on our website. In order to ensure all electives are available year round, subject to student numbers and ensuring the learning outcomes of every student in the class, courses may sometimes be combined.

### 13. Cambridge Language Assessment

Subject to student numbers and ensuring the learning outcomes of every student in the class, Cambridge 30 lessons per week programmes may be combined with LSI's Intensive English programme and/or electives.

### 14. Change fees

A minimum of 2 weeks' notice is required for any change. If you request a change of school location, course dates, accommodation or programme type after your course has started, you will be charged a change fee of UK: £60, Canada: CAD\$100, New Zealand: NZ\$100, Australia: AU\$100, France: €100, Switzerland: CHF100, which is payable at the time the request is made. LSI is not obliged to fulfil any change request. If changing to a location where fees are lower, the difference in fees will not be refunded. If changing to a more expensive location or programme, the difference in fees will be charged. You will not be charged a change fee if you extend your course.

# LSI Terms and Conditions (Continued...)

All changes are subject to LSI's discretion and require approval of the Programme Director. It is the responsibility of the student to pay for any course or accommodation extensions. Any change of tuition resulting in a reduction in lessons will be treated as a termination of the existing booking and rebooking (except in the USA), and will thus be subject to the standard terms & conditions governing terminations (see "Termination Policy"). In addition, certain visa types may disallow changes to course type and length. Please ask the school for more information at the time of booking.

## 15. Expulsion/Suspension

Any student who commits a criminal offence, violates the LSI Code of Conduct or a school behavioural policy, has a poor attendance record (based on the school's attendance policy, whether or not such attendance is in breach of any visa attendance requirements), is absent for 10 consecutive days without notification (USA), or fails to pay an amount he or she is directly or indirectly liable to pay LSI, may be expelled, suspended or removed from the course, school and any accommodation provided. No refund will be given and the immigration authorities will be informed.

## 16. Liability

The liability of LSI, its group companies, their directors, officers, employees, affiliates, agents and partners with respect to losses arising from negligence (except where such liability cannot be excluded as a matter of law), breach of contract or otherwise, will be limited in all circumstances to the full amount paid to LSI or the relevant LSI group company by the relevant student for the particular programme. Such companies and persons will in no circumstances have any liability for indirect or consequential losses or damages.

## 17. Force majeure

LSI will not be liable in cases where LSI is unable to fulfil any services to which they are contractually bound because of fire, natural disaster, act of government, failure of suppliers or subcontractors, labour disputes or other reasons which are beyond LSI's control.

## 18. Codes of practice

LSI has agreed to observe and be bound by the Code of Practice for the Pastoral Care of International Students as administered by our various local accrediting agencies. UK: British Council & ISI Private Further Education, USA: ACCET, Canada: Languages Canada, Australia: the Australian National Code of Practice 2007 and the Educational Services for Overseas Students Act 2000 (ESOS Act 2000) (information on which can be found at [www.aei.gov.au](http://www.aei.gov.au)), France: Qualité FLE, Switzerland: EAQUALS, New Zealand: NZQA. We strongly recommend all LSI NZ students to check NZQA's website [www.nzqa.govt.nz](http://www.nzqa.govt.nz) before booking. By agreeing to our Terms & Conditions upon enrolment, LSI NZ students are confirming that they have been made aware of information found on this website.

## 19. LSI Student Code of Conduct

Students must agree to abide by LSI's Student Code of Conduct and other policies while attending LSI. Inappropriate conduct includes but is not limited to: (1) disruptions to the learning environment including the classroom and online, (i.e. use of profanity, harassment, mobile phone use in classrooms, etc); (2) deliberate destruction, misuse, or theft of LSI property or the property of fellow classmates; (3) violence or threats of violence towards persons or property of students or LSI staff; (4) improper use of email or Internet access; and (5) failure to comply with local copyright or criminal laws forbidding the misappropriation, copying or alteration of copyright-protected materials. Further details of LSI's Code of Conduct can be found at [www.lsi.edu/code](http://www.lsi.edu/code)

**Damage to property:** LSI reserves the right to charge students who engage in vandalism, graffiti or criminal damage of any kind for the repair/replacement cost of any damage they cause. LSI also reserves the right to charge students responsible for damage caused to LSI property or 3rd party property by accident.

## 20. Student Visa UK, USA, Canada, New Zealand & Australia

At all LSI schools full attendance is expected. Student visa holders are required to provide LSI with a current residential address and telephone number at all times, maintain satisfactory academic progress and maintain satisfactory attendance, (subject to the school's own attendance policy). Students who fail to show up for their enrolment or do not maintain satisfactory attendance will be reported to the Department of Immigration and Citizenship (DIAC) in Australia, The Border Agency in the UK, Department of Homeland Security (DHS) in the USA, Citizenship and Immigration Canada (CIC) in Canada, or to New Zealand Immigration Services. In the UK, for students on Tier 4 visas, if 10 contact days are missed consecutively the student will be reported to the UK Border Agency. Information collected by LSI which personally identifies a student and information regarding a student's course progress may be shared with the Australian State and Federal or British government, Department of Homeland Security, state and accrediting agencies (USA), designated authorities, the Tuition Protection Service (Australia), students' parents, LSI staff and representatives. This information may include personal and contact details, course enrolment details and changes, and circumstances of any suspected breach by the student of any visa condition.

## 21. Prices

LSI has the right to change prices due to tax increases, governmental actions or other events beyond LSI's control. Prices listed for third party suppliers, including residence accommodation, are subject to change. If third party suppliers increase their prices after LSI has listed its annual prices, LSI reserves the right to pass on these increases to students. New Zealand: All fees, except homestay fees, are subject to a 15% government tax (GST). Should this be increased, our fees will increase accordingly.

## 22. Fees outstanding

Tuition fees include lessons, orientation meeting, use of computer room and internet in school, placement and progress testing, E-LSI online learning system, and a LSI certificate on completion of the course. LSI reserves the right to withhold the granting of a certificate attained by

a student if tuition fees or any other fees remain outstanding, or other conditions are not met.

## 23. Photography, Filming and Sound Recording

LSI or its representatives may arrange to photograph or shoot video footage of students or use their written feedback for promotional purposes, both printed and online. Any student who does not wish to participate should advise us at the time of booking and state at the time of the photographing or video shooting the wish not to participate. By accepting these terms and conditions the student (and their parent/guardian if under 18) gives consent to the use of these photographs or video footage without further consent or notification.

## 24. Online Learning

Online classes may be recorded for training and quality assurance purposes. Changes to or cancellations of on-line lessons must give at least 36 hours notice. Cancellations made after this time will result in a lost class.

## REFUND POLICY

### 1. Service Charges

Unless otherwise stated, enrolment fees are non-refundable. All other service charges having already been incurred by LSI, including but not limited to, courier fee, accommodation placement fee/deposit and medical insurance, will not be refunded (up to a maximum charge of US\$250 for LSI schools in California and US\$500 in other LSI USA schools).

### 2. Visa denials

On written notification of a visa rejection and receipt of relevant supporting documentation, 100% of fees will be refunded less enrolment fee, accommodation placement and all other (utilised) service charges. In all cases where a visa or visa support documentation has been issued, the relevant immigration authorities will be informed.

**Australia:** In Brisbane, in accordance with the Education Services for Overseas Students Act 2000, all course fees (tuition and non-tuition) will be refunded minus the lesser of the two following amounts a) 5% of the course fees received by LSI b) AU\$500.

### 3. Cancellation before the course start date

All cancellations must be in writing and sent by e-mail or post. The date of arrival at LSI of the email or of the letter determines the period of notice to be applied.

### 3(a), Tuition

UK, Australia, France & Switzerland: For cancellations made 31 days or more prior to the course start date, all tuition fees are refunded minus the registration fee. For cancellations made 1-30 days prior to the course start date, 2 weeks tuition fees are charged and the non-refundable registration fee.

**New Zealand:** (in accordance with the NZQA and LSI refund policy).

For cancellations made prior to the course start date, all tuition fees are refunded. The registration fee is non-refundable.

**USA:** For cancellations made prior to or on the course start date, all tuition fees are refunded minus the US\$250 in non-refundable enrolment/service (non-tuition) fees in California and US\$500 in non-refundable enrolment/service (non-tuition) fees in Massachusetts and New York. I-20 transfer is not possible before the start of the programme.

**Canada (Toronto):** For cancellations made less than 7 days after the contract is made, 75% of all tuition fees are refunded (maximum \$400 retained by LSI). For cancellations or dismissals from the program 30 days or more before the start of the course, 75% of all tuition fees are refunded. For cancellations or dismissals less than 30 days before the start of the course, 60% of all tuition fees are refunded.

**Canada (Vancouver):** For cancellations made less than 7 days after the contract is made, 95% of all tuition fees are refunded (maximum \$250 retained by LSI). For cancellations or dismissals from the program 30 days or more before the start of the course, 90% of all tuition fees are refunded. For cancellations or dismissals less than 30 days before the start of the course, 80% of all tuition fees are refunded.

### 3(b), Accommodation

**UK, Canada, New Zealand, Australia, France & Switzerland:** For cancellations made 14 days or more prior to the course start date, all accommodation fees are refunded, less any penalties incurred by LSI from 3rd party suppliers. For cancellations made 1-13 days prior to the course start date there is a charge of either 2 weeks accommodation fees or any penalties incurred by LSI from 3rd party suppliers (whichever is the greater sum).

**USA:** For cancellations made 7 days or more prior to the course start date, 100% of the accommodation fees will be refunded, less any actual housing costs incurred by LSI, including penalties from 3rd party suppliers. If less than 7 days' notice is provided for a cancellation, there is a charge of either 1 week accommodation fees or any penalties incurred by LSI from 3rd party suppliers (whichever is the greater sum).

## 4. Termination Policy – Cancellation after the course has started

'Termination' means stopping or leaving all or part of the course or courses booked, including extensions, once the first course has started. When determining the number of weeks completed, a partial week will be counted as a whole week, provided the student was present at least one day during the scheduled week. Used weeks of discounted tuition and accommodation packages will be charged at the full brochure weekly rate when any refund is calculated. In all cases additional service charges (airport transfers, courier fees, enrolment fees, insurance, accommodation placement fee, programme supplement fee, etc.) are non-refundable and written notification of termination must be given to the school Principal or Director. Students who terminate their programme may not be eligible to receive a LSI certificate and will not be allowed to stay in LSI accommodation.

## 4(a), Tuition

UK, Australia, France & Switzerland: No refunds will be made for tuition. Tuition fees are non-transferable to other students. Tuition fees paid cannot be converted to alternate courses.

**USA:** If the student terminates after having completed more than 60% of the program, there is no refund. In all other cases, unused tuition weeks are refundable. The I-20 will be cancelled immediately. For I-20 transfer, please check with schools about conditions.

**Canada (Toronto):** Students wishing to terminate must give 4 weeks' notice to the School Director. The refund will be calculated as follows according to the percentage of the course completed including the notice period: 0-10% of the programme has been completed: 50% refund of unused tuition fees, 11-29% of the programme has been completed: 30% refund of unused tuition fees, 30% or more of the programme has been completed: 0% refund of unused tuition fees.

**Canada (Vancouver):** Students can withdraw at any time without advanced notification. The refund will be calculated as follows according to the percentage of the course completed including the notice period: 0-10% of the programme has been completed: 70% refund of unused tuition fees, 11-29% of the programme has been completed: 50% refund of unused tuition fees, 30% or more of the programme has been completed: 0% refund of unused tuition fees.

## 4(b), Accommodation

UK, USA, Canada, Australia, Switzerland & France: Students must give 4 weeks' notice in writing to the School. A refund will be made of the unused accommodation fee less the applicable notice period and the applicable change fee. Penalties incurred by LSI from 3rd party suppliers as a result of accommodation terminations will be charged to the student (if in excess of any fees held from the notice period). For terminations made after 50% of the booking has been completed, no refund will be given in the UK.

## 5. New Zealand Termination Policy:

LSI NZ provides Termination refunds based on the package price (tuition, accommodation & all other service charges). For courses of 3 months or longer, students withdrawing within the first 10 working days of the course must be refunded in full less a deduction for costs incurred by LSI, up to a maximum of 25% of the fee total paid. LSI will provide the student with details of the cost components for the purpose of working out the maximum deductible percentage. In the event of a dispute over the cost component deducted, the student can contact iStudent Complaints by phone on 0800 00 66 75 or visit the iStudent Complaints website: <http://www.fairwayresolution.com/istudent-complaints>. [For Domestic Students: for courses of 3 months or longer, withdrawals made within the first 8 calendar days of the course will be refunded in full less a deduction of 10% or \$500 payable to LSI, whichever is the lower amount].

Where a foreign student enrolled on a course of study that is less than three months' duration withdraws from such a course, the following minimum refund entitlement will apply:

- For courses of up to and including four weeks and six days: where a student withdraws within the first two days of the course LSI will retain 50% of the full amount and refund the balance to the student.
- For courses of five weeks or more but less than three months: where a student withdraws within the first five days of the course LSI will retain 25% of the full amount and refund the balance to the student. Otherwise there are no refunds.

## 6. Method of Refund Payments

Refunds will be made via the LSI representative to whom the fees were originally paid, or via the same payment method and destination from which the fees were originally paid. Refunds made via an LSI representative are subject to the representative's own cancellation refund policies. All refunds will be made within 45 days of written notification unless otherwise stated.

**Australia:** Refunds will be paid within 14 working days of written notification. In accordance with sections 27-31 of ESOS Act 2000, providing the student has not withdrawn before the default day, LSI will pay a full refund to the student within 14 days if the course being offered does not commence on the agreed starting day or the course stops being provided at any time after it starts and before it is completed. This agreement and the availability of the complaints and appeals process does not prevent the student from taking action under Australia's customer protection laws.

**New Zealand:** LSI NZ is a booking, placing, and collection agent for Homestay (HB & B&B) and Hostel Accommodation. Any accommodation refunds will be made to the student on completion of the course if the student has given 2 weeks' notice in writing.

## SUBJECT TO CHANGE

These Terms and Conditions may differ according to any changes in policy made by the accrediting body or government where the school is located. You will be notified at the time of booking of any such amendments. Any dispute, claim or other matter arising will be subject to the current laws in the destination country.

All prices & dates in this brochure are correct at the time of printing, but are subject to change.

## Student Information

Family name: (as it appears in the passport)	
First name(s): (as it appears in the passport)	<input type="checkbox"/> Male <input type="checkbox"/> Female
Date of birth (D/M/Y):	
Country of birth:	City of birth (required for US I-20):
Nationality/Citizenship:	
Mother tongue:	
Occupation:	
Full address:	
City:	Postcode:
Passport number:	
Country:	
Student email (required for e-learning registration):	
Telephone (home):	Telephone (mobile):

### Students under 18 years of age (19 in Vancouver):

Name and surname of legal guardian:	
Telephone number of legal guardian:	
Email of legal guardian:	
Permanent address of legal guardian:	
City:	Postcode:

## LSI Representative Information

Partner name/ contact person:	
Country:	
Email:	
Telephone:	
For all partner bookings, please confirm who will be responsible for the total payment of this booking by selecting an option below:	
<input type="checkbox"/> Partner	<input type="checkbox"/> Partner and Student (please give details including amounts):
<input type="checkbox"/> Student	
Partner signature:	

## Course Information

School name and location:	
Course name:*	Lessons/week:
Number of weeks:	Start date (DD/MM/YY):
Language level:	Type of visa sought:

\* Please check the relevant school page and make sure your chosen course is offered at the school you have selected. For multi-centre courses please contact the LSI booking office.

## Accommodation

Accommodation type: <input type="checkbox"/> Homestay <input type="checkbox"/> Residence <input type="checkbox"/> Apartment <input type="checkbox"/> Hotel <input type="checkbox"/> I will arrange my own	Room type: <input type="checkbox"/> Single <input type="checkbox"/> Twin (2 beds)* <input type="checkbox"/> Double (1 bed)*	Meals per week: (if different options are advertised) <input type="checkbox"/> B&B <input type="checkbox"/> Full-board <input type="checkbox"/> Half-board
Homestay Supplements: (Only where advertised. Extra charges apply) <input type="checkbox"/> Private bathroom/Executive† <input type="checkbox"/> Close to school supplement (London and New York)†		Zone: (If applicable)
Accommodation name: (if known)		
Check-in date (D/M/Y):	Check-out date (D/M/Y):	
Do you have any special requests? (e.g. medical requirements, allergies, special diet, no cats/dogs) <input type="checkbox"/> Yes <input type="checkbox"/> No	If yes, please specify:	Do you smoke? <input type="checkbox"/> Yes <input type="checkbox"/> No

Other accommodation supplements may apply, including seasonal supplements during the summer or at Christmas. See price list or contact the school for details.

\* 2 students booking together † Subject to availability. Please check before booking.

## Additional Services

Would you like LSI to organise insurance? <input type="checkbox"/> Yes <input type="checkbox"/> No If not, you will need to organise your own medical insurance.		
If you are travelling to Australia, would you like Overseas Student Health Cover? (Mandatory for student visa) <input type="checkbox"/> Yes <input type="checkbox"/> No		
Would you like an airport transfer? (If yes, please send us your flight details)	On arrival: <input type="checkbox"/> Yes <input type="checkbox"/> No	On departure: <input type="checkbox"/> Yes <input type="checkbox"/> No
Would you like to receive your course confirmation/visa application documents by courier (express) mail for an additional fee? <input type="checkbox"/> Yes <input type="checkbox"/> No		
I would also like to book the following services: (Not available in all destinations. Additional fees may apply. Please check the relevant school page) <input type="checkbox"/> Internship Placement <input type="checkbox"/> University Pathway		

## Payment

At this time, I wish to pay: <input type="checkbox"/> the enrolment fee <input type="checkbox"/> the full fees
<b>Method of Payment:</b>
<input type="checkbox"/> I wish to pay by credit card. (Please pay online at <a href="http://www.lsi.edu">www.lsi.edu</a> or contact LSI to arrange payment)
<input type="checkbox"/> I enclose a cheque made payable to Language Studies International (LSI). (Not available at LSI Zurich) Cheque amount:
<input type="checkbox"/> I would like to pay via bank transfer. Please send me transfer details.
<input type="checkbox"/> I am sponsored by:

## Medical and Psychological Conditions

Do you have a disability, impairment or long-term medical or psychological condition which may affect your studies? <input type="checkbox"/> Yes <input type="checkbox"/> No If yes, please provide further information. Please see our Terms and Conditions/Health Declaration.
---

## Declaration

<input type="checkbox"/> I authorise any licensed hospital or physician to initiate medical treatment for myself in case of medical emergency or for my child if he/she is under 18 years of age (19 in Vancouver).	
<input type="checkbox"/> I confirm that I have read, understood and agree to be bound by LSI's Terms and Conditions ( <a href="http://www.lsi.edu/terms">www.lsi.edu/terms</a> ).	
In order for you or your child to study with us, LSI processes your data and/or that of your child. How and why we do this, and your rights over this data, are in our Privacy Statement.	
<input type="checkbox"/> I have read, understand and consent to LSI processing the data as described in our Privacy Statement ( <a href="http://www.lsi.edu/privacy">www.lsi.edu/privacy</a> )	
Student Signature:	Date:
Signature of parent/guardian:*	Date:

\* Required if student is under 18 years old or 19 years old in Vancouver

Please return the completed form to the LSI booking office or to your local representative.

Special Promotion Code: