

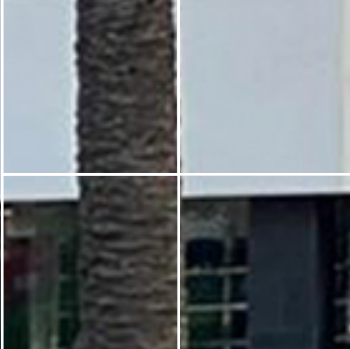
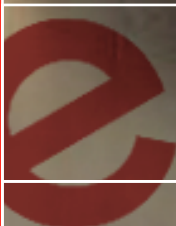
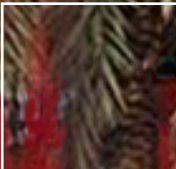


Universidad  
Europea VALENCIA

Undergraduate  
programmes

**Tuition  
Fee table.  
New enrolments.**

**Go beyond**



# Tuition Fee table Undergraduate programmes New enrolments.

## New enrolments. Academic year 2022/23.

This document informs of the fees and payment methods of the Universidad Europea de Valencia for the academic year.

All new enrolments to the Universidad Europea de Valencia are required to pay: enrolment fee, opening of student file fee and tuition fee.

### ENROLMENT FEE.

The enrolment fee implies that the student confirms that they are willing to take the university place and would like to continue with the enrolment process, thus ensuring a place in the selected degree programme.


The payment of the place enrolment fee must be made before enrolment takes place.

The amount will vary according the chosen Degree (see fees table).

After receiving the notification of the admission at the Universidad Europea de Valencia you must pay the enrolment fee via one of these options:

- **Credit Card:** it is the fastest option for enrolment.
- **Direct debit.**
- **Online transfer.**

## Admissions Department.

 Universidad Europea de Valencia. Edificio A  
Paseo de la Alameda, 7 | 46010 Valencia.

 [ads.valencia@universidadeuropea.es](mailto:ads.valencia@universidadeuropea.es)

### OPENING OF STUDENT FILE FEE.

The opening of a student file is a compulsory administrative procedure that must be carried out for all new students who enter the Universidad Europea de Valencia in order to be enrolled in the University. This administrative procedure carries a charge of 550€.

### TUITION FEE.

The yearly tuition fee is calculated by multiplying the number of credits/ECTS in which the student enrolls by the cost per credit/ECTS.



In case of any discrepancy with the information provided by an advisor, consult University Policy.

# Tuition Fee table Undergraduate programmes New enrolments.

## Options of tuition fee payment.

### TUITION FEE PAYMENT.

**Annual Payment:** a single payment of the total tuition fee cost. Bank transfer directly to the designated bank account:


- For students enrolled before September 1, the payment must be made before September 1.
- For students enrolled from September 1 onwards, payment must be made within the following 5 days of enrolment.

This method of payment does not exclude the student from the submission of a completed direct debit form.

**Monthly Payment:** equal monthly instalments. The number of months is based on the start of the first subject and the end of the final subject, as long as the teaching is continuous.

**Deferred Monthly Payment:** monthly payments until August. Possibility of deferring your payments until August. Applicable to Degree courses, not including Adaptation Courses, pre-Degree courses, students in the final year, nor students with discontinuous teaching programs.

## Admissions Department.

 Universidad Europea de Valencia. Edificio A  
Paseo de la Alameda, 7 | 46010 Valencia.

 [ads.valencia@universidadeuropea.es](mailto:ads.valencia@universidadeuropea.es)

### PAYMENT METHODS.

**Direct Debit:** each month, Universidad Europea de Valencia will send the payment request to the bank account provided by the student according to the selected payment method.

**Flywire Payment:** for students who cannot open a national bank account or SEPA (Single Euro Payment Area).

### RECOGNITION OF CREDITS.

In the case of recognizing credits for the Global Bachelor's Degree in Business Administration and Entrepreneurship, there will be a charge of 40€ per recognized credit.

The credits that are recognized in other official university degree programmes do not carry a charge and will be 100% deducted from the enrolment fee.



**In case of any discrepancy with the information provided by an advisor, consult University Policy.**



## Tuition Fee table Undergraduate programmes New enrolments.

STEAM	Lang	N° ECTS	ECTS Price	Enrolment fee	Tuition	Tuition in 10 monthly instalments	Tuition in 12 monthly instalments	TOTAL*
Bachelor's Degree in Physics	ES	60	115 €	1.000 €	6.900 €	690 €	575 €	7.900 €
Bachelor's Degree in Industrial Organization	ES	60	115 €	1.000 €	6.900 €	690 €	575 €	7.900 €
Bachelor's Degree in Data Science	ES	60	115 €	1.000 €	6.900 €	690 €	575 €	7.900 €
Double Degree: Industrial Organization + Business Administration and Management	ES	72	112 €	1.000 €	8.064 €	806,4 €	672 €	9.064 €

Health	Lang	N° ECTS	ECTS Price	Enrolment fee	Tuition	Tuition in 10 monthly instalments	Tuition in 12 monthly instalments	TOTAL*
Bachelor's Degree in Biotechnology	ES	60	129 €	1.200 €	7.740 €	774 €	645 €	8.940 €
Bachelor's Degree in Nursing	ES	60	121 €	1.200 €	7.260 €	726 €	605 €	8.460 €
Bachelor's Degree in Physiotherapy	ES	60	138 €	1.200 €	8.280 €	828 €	690 €	9.480 €
Bachelor's Degree in Psychology	ES	60	101 €	1.000 €	6.060 €	606 €	505 €	7.060 €
Bachelor's Degree in Dentistry	ES	60	264 €	1.900 €	15.840 €	1.584 €	1.320 €	17.740 €
Bachelor's Degree in Dentistry	EN	60	301 €	2.200 €	18.060 €	1.806 €	1.505 €	20.260 €

Social Sciences	Lang	N° ECTS	ECTS Price	Enrolment fee	Tuition	Tuition in 10 monthly instalments	Tuition in 12 monthly instalments	TOTAL*
Bachelor's Degree in Business Administration and Management	ES	60	118 €	1.000 €	7.080 €	708 €	590 €	8.080 €
Bachelor's Degree in Marketing	ES	60	115 €	1.000 €	6.900 €	690 €	575 €	7.900 €
Double Degree: Business Administration and Management + Marketing	ES	63	116 €	1.000 €	7.308 €	730,8 €	609 €	8.308 €
Bachelor's Degree in Law	ES	60	108 €	1.000 €	6.480 €	648 €	540 €	7.480 €
Bachelor's Degree in Criminology	ES	60	106 €	1.000 €	6.360 €	636 €	530 €	7.360 €
Double Degree: Criminology + Law	ES	75	105 €	1.000 €	7.875 €	787,5 €	656,25 €	8.875 €
Double Degree: Criminology + Psychology	ES	72	108 €	1.000 €	7.776 €	777,6 €	648 €	8.776 €
Double Degree: Law + International Relations	ES	78	128 €	1.000 €	9.984 €	998,4 €	832 €	10.984 €
Bachelor's Degree in Translation and Intercultural Communication	EN-ES DE-FR	60	118 €	1.000 €	7.080 €	708 €	590 €	8.080 €
Bachelor's Degree in Tourism and Leisure Management	EN	60	113 €	1.200 €	6.780 €	678 €	565 €	7.980 €
Global Bachelor's Degree in Business Management and Entrepreneurship	EN	60	161 €	1.200 €	9.660 €	966 €	805 €	10.860 €
Global Bachelor's Degree in International Relations	EN	60	156 €	1.200 €	9.360 €	936 €	780 €	10.560 €

Academic fees simulation for the whole academic year.

\* TOTAL amount: it does not include the opening of the student record.

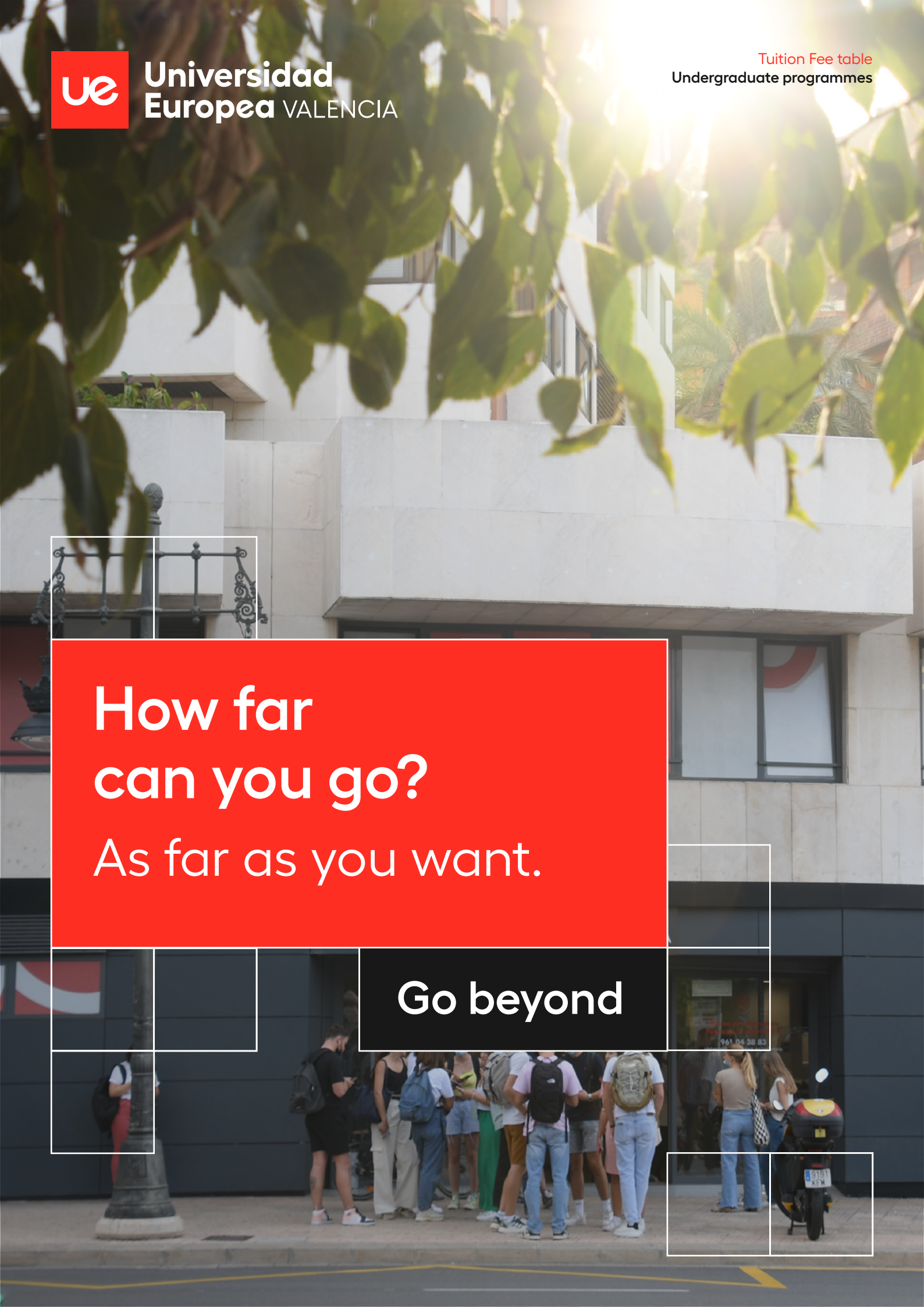


Universidad  
Europea VALENCIA

Tuition Fee table  
Undergraduate programmes

How far  
can you go?  
As far as you want.

Go beyond





**Universidad  
Europea** VALENCIA

## Admissions Department.

Universidad Europea de Valencia. Edificio A  
Paseo de la Alameda, 7 | 46010 Valencia.

[ads.valencia@universidadeuropea.es](mailto:ads.valencia@universidadeuropea.es)

